

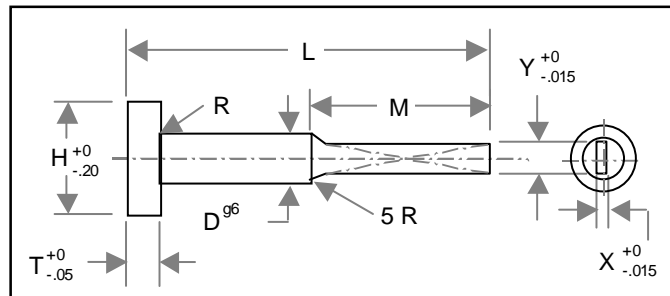
BLADE EJECTORS

Plastixs Blade Ejectors are hardened throughout to eliminate chipping and allow flexing.

- ⇒ Material: O-1
- ⇒ Hardness: 62 Rc
- ⇒ Head hardness: 45 Rc
- ⇒ Surface finish: 2-6 RMS
- ⇒ Concentricity to Dø 0.05

Metric Reference Chart

D	H	T	R	X	Y
4(.157)	8(.315)	3(.118)	0.3(.012)	1.0(.039)	3.5(.157)
4(.157)	8(.315)	3(.118)	0.3(.012)	1.2(.047)	3.5(.157)
5(.197)	10(.394)	3(.118)	0.3(.012)	1.5(.059)	4.5(.197)
6(.236)	12(.472)	5(.197)	0.5(.020)	1.2(.047)	5.5(.236)
6(.236)	12(.472)	5(.197)	0.5(.020)	1.5(.059)	5.5(.236)
6(.236)	12(.472)	5(.197)	0.5(.020)	2.0(.079)	5.5(.236)
8(.315)	14(.551)	5(.197)	0.5(.020)	1.2(.047)	7.5(.315)
8(.315)	14(.551)	5(.197)	0.5(.020)	1.5(.059)	7.5(.315)
8(.315)	14(.551)	5(.197)	0.5(.020)	2.0(.079)	7.5(.315)
10(.394)	16(.630)	5(.197)	0.8(.031)	1.5(.059)	9.5(.394)
10(.394)	16(.630)	5(.197)	0.8(.031)	2.0(.079)	9.5(.394)
12(.472)	20(.787)	7(.276)	0.8(.031)	2.0(.079)	11.5(.472)
12(.472)	20(.787)	7(.276)	0.8(.031)	2.5(.098)	11.5(.472)



Note: All dimensions and tolerances are in millimeters

mm(inch)

D	H	T	R	X	Y	L 60 mm	L 80 mm	L 100 mm	L 125 mm	L 160 mm	L 200 mm	L 250 mm	L 315 mm	L 400 mm
4	8	3	0.3	1.0	3.5	PE6-4-1.0L60	PE6-4-1.0L80	PE6-4-1.0L100	PE6-4-1.0L125	PE6-4-1.0L160	—	—	—	—
4	8	3	0.3	1.2	3.5	—	PE6-4-1.2L80	PE6-4-1.2L100	PE6-4-1.2L125	PE6-4-1.2L160	—	—	—	—
5	10	3	0.3	1.5	4.5	—	PE6-5-1.5L80	PE6-5-1.5L100	PE6-5-1.5L125	PE6-5-1.5L160	—	—	—	—
6	12	5	0.5	1.2	5.5	—	PE6-6-1.2L80	PE6-6-1.2L100	PE6-6-1.2L125	PE6-6-1.2L160	PE6-6-1.2L200	—	—	—
6	12	5	0.5	1.5	5.5	—	PE6-6-1.5L80	PE6-6-1.5L100	PE6-6-1.5L125	PE6-6-1.5L160	PE6-6-1.5L200	—	—	—
6	12	5	0.5	2.0	5.5	—	PE6-6-2.0L80	PE6-6-2.0L100	PE6-6-2.0L125	PE6-6-2.0L160	PE6-6-2.0L200	—	—	—
8	14	5	0.5	1.2	7.5	—	—	PE6-8-1.2L100	PE6-8-1.2L125	PE6-8-1.2L160	PE6-8-1.2L200	PE6-8-1.2L250	—	—
8	14	5	0.5	1.5	7.5	—	—	PE6-8-1.5L100	PE6-8-1.5L125	PE6-8-1.5L160	PE6-8-1.5L200	PE6-8-1.5L250	—	—
8	14	5	0.5	2.0	7.5	—	—	PE6-8-2.0L100	PE6-8-2.0L125	PE6-8-2.0L160	PE6-8-2.0L200	PE6-8-2.0L250	PE6-8-2.0L315	—
10	16	5	0.5	1.5	9.5	—	—	—	—	PE6-10-1.5L160	PE6-10-1.5L200	PE6-10-1.5L250	PE6-10-1.5L315	—
10	16	5	0.5	2.0	9.5	—	—	—	—	PE6-10-2.0L160	PE6-10-2.0L200	PE6-10-2.0L250	PE6-10-2.0L315	PE6-10-2.0L400
12	20	7	0.8	2.0	11.5	—	—	—	—	—	PE6-12-2.0L200	PE6-12-2.0L250	PE6-12-2.0L315	PE6-12-2.0L400
12	20	7	0.8	2.5	11.5	—	—	—	—	—	PE6-12-2.5L200	PE6-12-2.5L250	PE6-12-2.5L315	PE6-12-2.5L400
16	22	7	0.8	2.0	15.5	—	—	—	—	—	PE6-16-2.0L200	PE6-16-2.0L250	PE6-16-2.0L315	PE6-16-2.0L400
Blade Length M						M	M	M	M	M	M	M	M	M
						30 mm	40 mm	50 mm	60 mm	80 mm	100 mm	125 mm	155 mm	200 mm



151 Memorial Drive, Unit H

www.plastixs.com

E-Mail: sales@plastixs.com

Toll Free: 888-792-2223

Tel: 508-842-1606

Fax: 508-842-4406

Price List

Blade Ejectors

<u>Stock Number</u>	<u>Price/Pin</u>	<u>Stock Number</u>	<u>Price/Pin</u>
PE6-4-1.0L60	\$14.63	PE6-8-2.0L315	\$52.39
PE6-4-1.0L80	\$15.96	PE6-10-1.5L160	\$55.05
PE6-4-1.0L100	\$17.55	PE6-10-1.5L200	\$62.50
PE6-4-1.0L125	\$21.01	PE6-10-1.5L250	\$71.28
PE6-4-1.0L160	\$28.19	PE6-10-1.5L315	\$85.11
PE6-4-1.2L80	\$15.16	PE6-10-2.0L160	\$48.40
PE6-4-1.2L100	\$16.76	PE6-10-2.0L200	\$60.37
PE6-4-1.2L125	\$20.21	PE6-10-2.0L250	\$68.09
PE6-4-1.2L160	\$27.39	PE6-10-2.0L315	\$82.18
PE6-5-1.5L80	\$16.76	PE6-10-2.0L400	\$93.62
PE6-5-1.5L100	\$19.68	PE6-12-2.0L200	\$73.67
PE6-5-1.5L125	\$23.94	PE6-12-2.0L250	\$91.49
PE6-5-1.5L160	\$28.99	PE6-12-2.0L315	\$106.12
PE6-6-1.2L80	\$17.82	PE6-12-2.0L400	\$131.91
PE6-6-1.2L100	\$23.40	PE6-12-2.5L200	\$70.21
PE6-6-1.2L125	\$28.19	PE6-12-2.5L250	\$88.03
PE6-6-1.2L160	\$32.71	PE6-12-2.5L315	\$101.86
PE6-6-1.2L200	\$40.96	PE6-12-2.5L400	\$127.39
PE6-6-1.5L80	\$18.35	PE6-16-2.0L200	\$93.62
PE6-6-1.5L100	\$28.67	PE6-16-2.0L250	\$116.49
PE6-6-1.5L125	\$27.66	PE6-16-2.0L315	\$135.11
PE6-6-1.5L160	\$32.18	PE6-16-2.0L400	\$168.62
PE6-6-1.5L200	\$32.71	PE6-16-2.5L200	\$88.30
PE6-6-2.0L80	\$17.55	PE6-16-2.5L250	\$111.97
PE6-6-2.0L100	\$21.81	PE6-16-2.5L315	\$130.05
PE6-6-2.0L125	\$26.06	PE6-16-2.5L400	\$162.50
PE6-6-2.0L160	\$31.38		
PE6-6-2.0L200	\$33.24		
PE6-8-1.2L100	\$31.91		
PE6-8-1.2L125	\$37.50		
PE6-8-1.2L160	\$42.29		
PE6-8-1.2L200	\$47.34		
PE6-8-1.2L250	\$59.04		
PE6-8-1.5L100	\$30.85		
PE6-8-1.5L125	\$36.97		
PE6-8-1.5L160	\$41.76		
PE6-8-1.5L200	\$46.54		
PE6-8-1.5L250	\$50.00		
PE6-8-2.0L100	\$25.00		
PE6-8-2.0L125	\$30.05		
PE6-8-2.0L160	\$40.16		
PE6-8-2.0L200	\$44.15		
PE6-8-2.0L250	\$48.67		