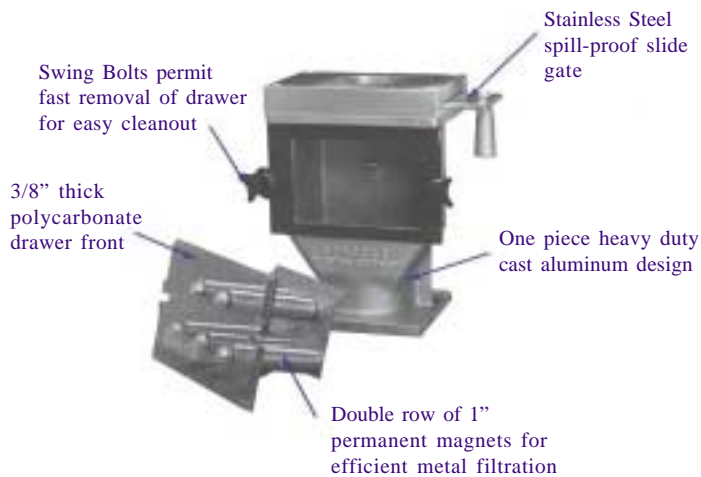


# DRAWER MAGNETS

Drawer Magnets provide economical continuous protection against costly machine downtime for all kinds of plastic resin processing machinery. Mounted on the machine feed throat, Drawer Magnets prevent ferrous tramp metals from contaminating resin and reduce maintenance due to plugged nozzles, mould gates and extrusion dies.



The magnetic drawer is fast and easy to remove which encourages frequent cleaning of the magnets. Unlike conventional "in hopper" magnets, the drawer magnet must be in place in order to allow operation of the processing machinery. Once in place, the magnetic grid cannot shift to one side leaving open areas for tramp metal to slip through.

Drawer Magnets are available in three sizes with or without the spill-proof slide gate. They are custom machined to suit your application.

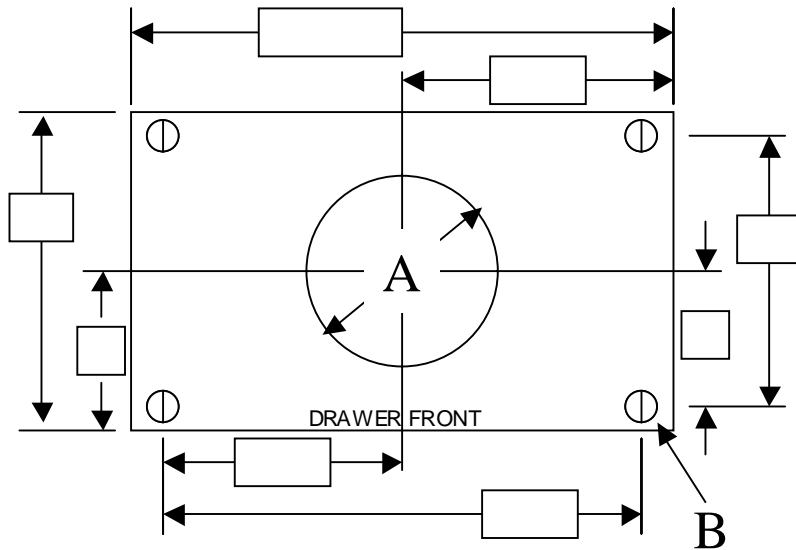
## PROTECTION AGAINST TRAMP METAL DAMAGE

Model	Number of Magnets	Throat Size (max.)	Top Plate	Bottom Plate	Height	Price
<b>SDM-3</b>	3	2-1/2" (64mm)	6-1/4" x 6" (159mm x 153mm)	4-3/4" x 4-3/4" (120mm x 120mm)	8-1/4" (210mm)	<b>\$440</b>
<b>SDM-5</b>	5	3-1/2" (89mm)	8-1/4" x 6" (210mm x 153mm)	6-3/4" x 6-3/4" (172mm x 172mm)	11-1/4" (286mm)	<b>\$565</b>
<b>SDM-7</b>	7	5-1/2" (140mm)	10-3/4" x 8" (274mm x 204mm)	9-1/4" x 9-1/4" (235mm x 235mm)	11-1/4" (286mm)	<b>\$725</b>
Optional: Custom Adapter Plates, Purge Chute, Liquid Dispensing Port, Rare Earth Magnet Bars, Stainless Steel Drawer Front, All Stainless Steel Construction						

*Manufactured by Spaltech International*

# DRAWER MAGNETS SIZING SPECIFICATIONS

## Top Plate Dimensions to match base of hopper



A - Indicate Shape



B \_\_\_\_\_ Hole on Tap Size

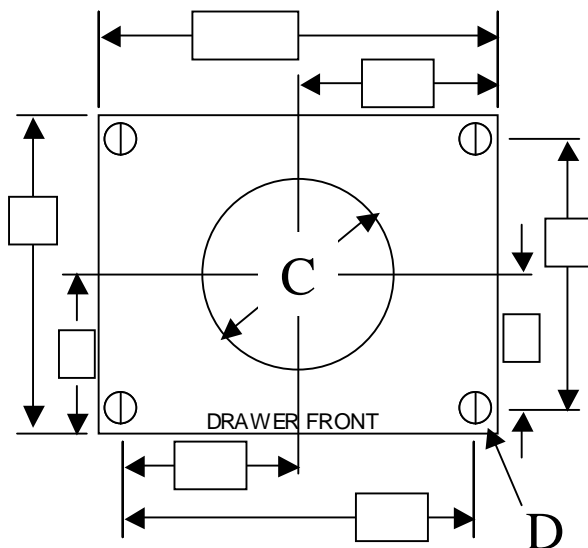
Shut-off required?

- Yes  
 No

If yes,

- Right side, or  
 Left side

## Bottom Plate Dimensions to match machine feedthroat



C \_\_\_\_\_ Round Only

D \_\_\_\_\_ Hole on Tap Size

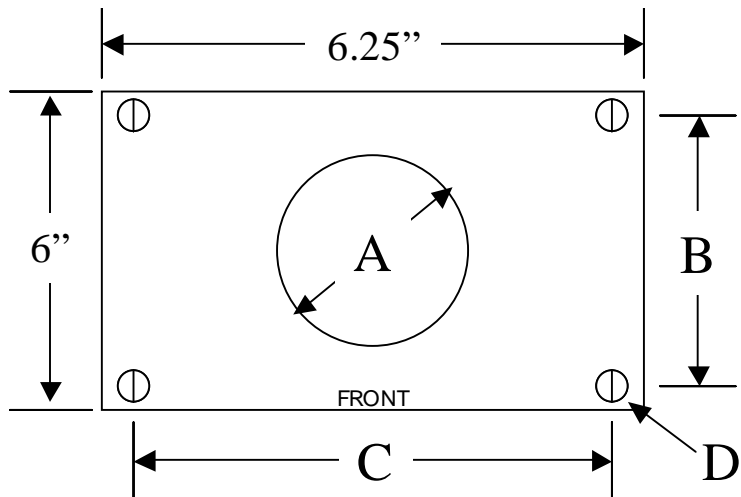
Other Options Required:

- Side mounted color additive feeder  
 Side mounted purge hopper  
 Liquid color dispensing port  
 Discharge dump tube  
 Rare earth magnets

# DRAWER MAGNETS SIZING SPECIFICATIONS

## Model SDM-3

### Top Plate Dimensions



A - Indicate Shape

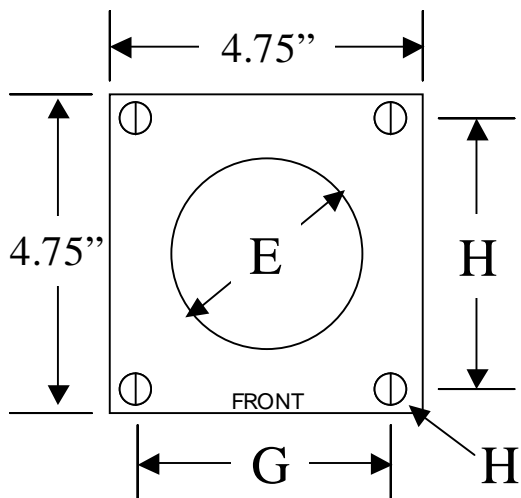


B \_\_\_\_ Center to Center

C \_\_\_\_ Center to Center

D \_\_\_\_ Hole or Tap Size

### Bottom Plate Dimensions



E \_\_\_\_ Max. Dia - 2.50"  
(round only)

F \_\_\_\_ Center to Center

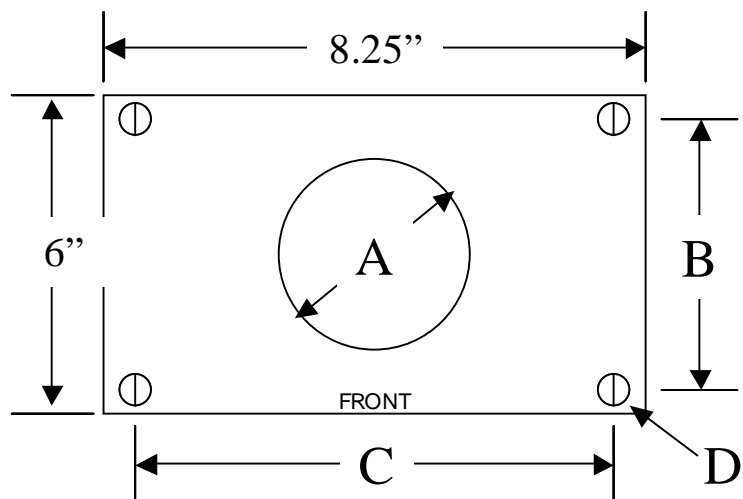
G \_\_\_\_ Center to Center

H \_\_\_\_ Hole or Tap Size

# DRAWER MAGNETS SIZING SPECIFICATIONS

## Model SDM-5

### Top Plate Dimensions



A - Indicate Shape

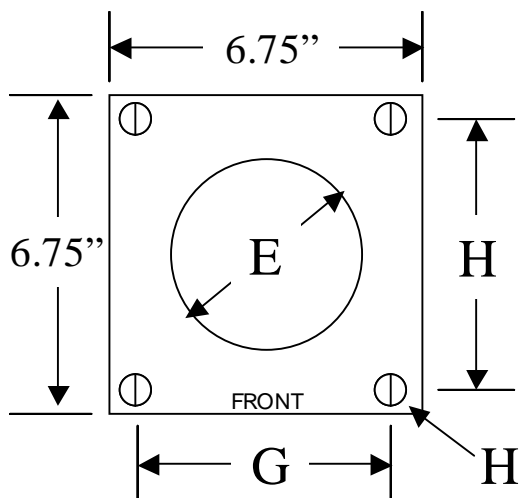


B \_\_\_\_ Center to Center

C \_\_\_\_ Center to Center

D \_\_\_\_ Hole or Tap Size

### Bottom Plate Dimensions



E \_\_\_\_ Max. Dia - 3.50"  
(round only)

F \_\_\_\_ Center to Center

G \_\_\_\_ Center to Center

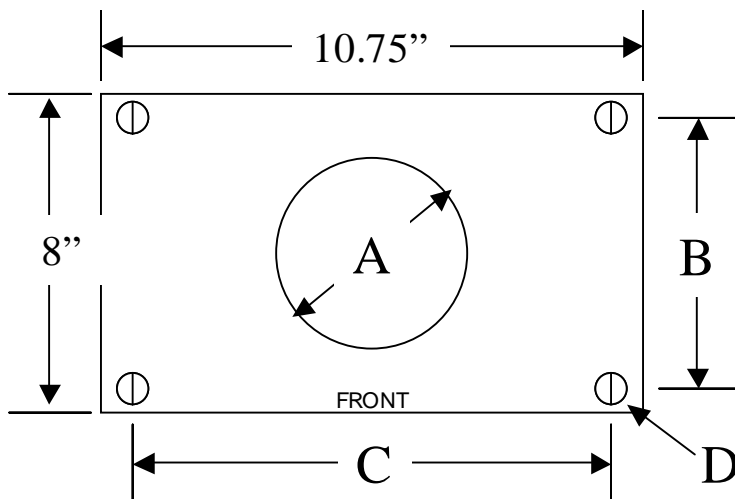
H \_\_\_\_ Hole or Tap Size

# DRAWER MAGNETS

## SIZING SPECIFICATIONS

### Model SDM-7

#### Top Plate Dimensions



A - Indicate Shape

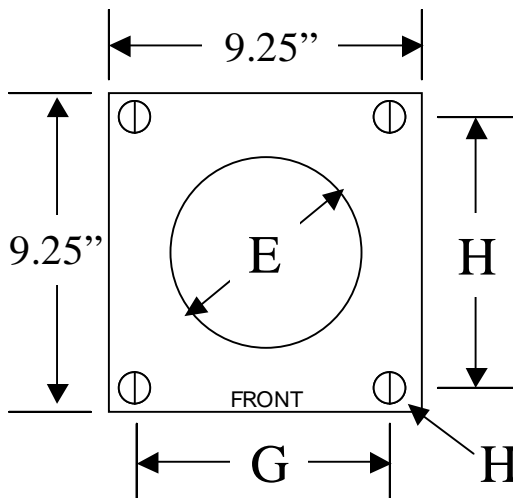


B \_\_\_\_\_ Center to Center

C \_\_\_\_\_ Center to Center

D \_\_\_\_\_ Hole or Tap Size

#### Bottom Plate Dimensions



E \_\_\_\_\_ Max. Dia - 5.50"  
(round only)

F \_\_\_\_\_ Center to Center

G \_\_\_\_\_ Center to Center

H \_\_\_\_\_ Hole or Tap Size