

Abrasion resistant and antistatic suction and transport hose; PUR <10<sup>9</sup> Ω, super-heavy, smooth interior, vacuum-proof

## Applications

- plastic industry, conveying of granulates and powders: granulate conveying devices, vacuum hoppers/ conveyors, suction conveyors, dosing systems, bulk-bag (big bag)-charging and discharging, shredders, mills, extruders, injection moulding machines
- suction vehicles: roof gravelling, roof gravel conveying
- suction vehicles, dry suction trucks: industrial cleaning, furnace cleaning
- suction excavators
- extraction or conveying in explosion hazard areas, electrostatic discharging hoses, antistatic hoses, electrically conductive hoses
- agricultural industry: pneumatic grain conveyor
- construction industry: rock drills, rock drilling machines
- raw material conveying hose for powders, granulates, sand, quartz, gravel, shards and chips/ shavings
- compressors, side channel blowers, vacuum pumps, pressure pumps, pumps
- paper mills, paper and pulp industry, packaging machines: edge strip suctioning system/ edge trim exhaust systems
- shot blasting/ sand blasting return e.g. at blasting chambers, ship yards
- silos, silo vehicles/ silo trucks, tankers/ tank trucks: silo charging, silo discharging

- silos, silo vehicles/ silo trucks, tankers/ tank trucks: conveying of wood pellets, plastic granulates, plastic powders

## Properties

- the wall is permanently capable of electrostatic discharge owing to the non-migrating antistatic material: electrical and surface resistance <10<sup>9</sup> Ω
- super-heavy model
- extremely abrasion-resistant with reinforcement underneath wire and narrow hose pitch (abrasion resistance about 2.5 to 5 times better than most rubber materials and about 3 to 4 times better than most soft PVC's)
- smooth interior
- optimized flow properties
- flexible with low weight
- very high pressure, vacuum and compression resistance
- high axial strength
- high tensile strength and tear resistant
- good resistance to oil, gasoline, and chemicals
- good resistance to UV and ozone
- small bending radiuses
- kink-proof
- free of softener and halogens
- gas- and liquid-tight
- conforms to RoHS guideline

## Temperature range

- 40°F to 195°F
- short time to 255°F

## Design, Material

AIRDUC® profile hose

- spring steel wire firmly embedded in wall
- profile with optimized flow properties; wall: permanently antistatic premium ester-polyurethane (Pre-PUR®)
- wall thickness 0.08 in - 0.10 in approx.
- reinforcement of the primary abrasion areas

## Delivery variants

- further diameters and lengths available on request
- transparent (standard)
- special colors: full colored
- customer-specific product marking
- wall: "bioplastic" derived from renewable raw materials
- on request with additional inliner reinforcement
- as a pre-assembled hose system with CON-NECT connectors
- customized connectors

I.D. in / mm	O.D. in	Over- pressure psi	Under- pressure inHG	Bending Radius Inch	Weight lbs./ft	Stock length ft	Further production lengths ft	Order No.
1.25 / 32	1.69	74.70	29.55	3.94	0.455	-	25 50	356-0032-0000
1.5 / 38	1.93	63.55	29.55	4.45	0.530	25 50	-	356-0038-0000
- / 40	2.00	60.50	29.55	4.65	0.550	25 50	-	356-0040-0000
1.75 / 45	2.20	54.40	29.55	5.06	0.610	-	25 50	356-0045-0000
- / 50	2.40	52.95	29.55	5.50	0.670	-	25 50	356-0050-0000
2 / 51	2.44	52.21	29.53	5.57	0.690	25 50	-	356-0051-0000
- / 55	2.60	49.60	29.55	5.93	0.730	-	25 50	356-0055-0000
2.36 / 60	2.80	45.70	29.55	6.38	0.795	25 50	-	356-0060-0000
2.5 / 63	2.91	43.51	29.53	6.63	0.830	25 50	-	356-0063-0000
- / 65	3.00	42.20	29.55	6.79	0.855	-	25 50	356-0065-0000
- / 70	3.20	39.30	29.55	7.32	0.920	25 50	-	356-0070-0000
- / 75	3.43	36.85	29.55	7.78	0.980	-	25 50	356-0075-0000
3 / 76	3.46	36.26	29.53	7.87	0.990	25 50	-	356-0076-0000
- / 80	3.62	34.50	29.55	8.23	1.040	-	25 50	356-0080-0000
3.5 / 89	3.98	30.45	29.55	9.13	1.140	25 50	-	356-0089-0000
- / 90	4.06	30.75	29.55	10.39	1.385	-	25 50	356-0090-0000

Positive and negative pressure ratings are the recommended maximum operating values. Products can be manufactured to meet higher operating values upon request. The bend radius is calculated from the center of the hose in an arched position. Additional information at [www.norres.com](http://www.norres.com). NORRES reserves the right to modify technical data at any time. Technical data based on tests at 68°F and are approx. values. Proper use and maintenance of NORRES hoses is the sole responsibility of purchaser and ultimate user of the product. The individual conditions, applications and the number of variables make firm recommendations technically impossible. This information is intended as a general guide only.

I.D. in / mm	O.D. in	Over- pressure psi	Under- pressure inHG	Bending Radius Inch	Weight lbs./ft	Stock length ft	Further production lengths ft	Order No.
- / 100	4,45	27.70	29.55	11.38	1.525	-	25 50	356-0100-0000
4 / 102	4,53	27.25	29.55	11.81	1.550	25 50	-	356-0102-0000
- / 110	4,84	25.25	29.10	12.36	1.665	-	25 50	356-0110-0000
4,5 / 115	5,04	24.20	28.35	12.85	1.735	-	25 50	356-0115-0000
4,72 / 120	5,24	23.20	27.60	13.35	1.810	-	25 50	356-0120-0000
- / 125	5,43	22.35	26.60	13.84	1.880	-	25 50	356-0125-0000
5 / 127	5,51	21.90	26.30	14.06	1.910	25 50	-	356-0127-0000
- / 130	5,63	21.45	25.55	14.33	1.950	-	25 50	356-0130-0000
5,5 / 140	6,02	19.95	24.80	15.31	2.090	25 50	-	356-0140-0000
- / 150	6,42	18.55	24.80	16.30	2.475	-	25 50	356-0150-0000
6 / 152	6,50	18.40	24.65	16.54	2.500	25 50	-	356-0152-0000
6,3 / 160	6,81	17.55	23.75	17.28	2.625	-	25 50	356-0160-0000
6,5 / 165	7,01	17.05	23.35	19.57	2.710	25 50	-	356-0165-0000
- / 170	7,20	16.45	23.05	21.85	2.790	-	25 50	356-0170-0000
- / 175	7,40	16.05	22.30	22.46	2.865	-	25 50	356-0175-0000
7 / 178	7,52	15.25	22.15	19.09	3.120	25 50	-	356-0178-0000
- / 180	7,60	15.50	21.85	23.07	2.945	-	25 50	356-0180-0000
- / 200	8,43	14.05	19.50	28.94	3.265	-	25 50	356-0200-0000
8 / 203	8,50	12.20	20.65	21.54	3.705	25 50	-	356-0203-0000
- / 225	9,41	12.45	16.70	32.26	3.660	-	25	356-0225-0000
9 / 228	9,53	12.60	15.20	38.62	4.070	-	25	356-0228-0000
- / 250	10,39	11.30	12.10	52.17	4.940	-	25	356-0250-0000
10 / 254	10,94	11.10	11.20	52.97	5.020	-	25	356-0254-0000
- / 275	11,38	10.25	8.10	57.18	5.425	-	25	356-0275-0000
11 / 280	11,57	9.85	7.40	59.11	5.515	-	25	356-0280-0000
- / 300	12,36	9.45	6.35	62.01	5.900	-	25	356-0300-0000
12 / 305	12,56	9.15	5.90	62.99	6.000	-	25	356-0305-0000

## Accessories



CLAMP 216



CLAMP 211

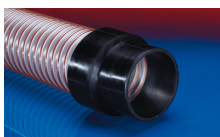


CONNECT 228

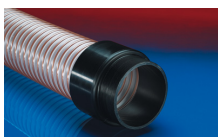

CONNECT SAFETY  
CLAMP ASSEMBLY 231

CONNECT PRESS  
ASSEMBLY 232

CONNECT MOULD  
ASSEMBLY 233

CONNECT THREAD  
FITTING 234


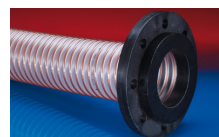
CONNECT 240 + 241



CONNECT 242



CONNECT 243



CONNECT 244



CONNECT 245 CSH



CONNECT 245



CONNECT 246



CONNECT 248

Positive and negative pressure ratings are the recommended maximum operating values. Products can be manufactured to meet higher operating values upon request. The bend radius is calculated from the center of the hose in an arched position. Additional information at [www.norres.com](http://www.norres.com). NORRES reserves the right to modify technical data at any time. Technical data based on tests at 68°F and are approx. values. Proper use and maintenance of NORRES hoses is the sole responsibility of purchaser and ultimate user of the product. The individual conditions, applications and the number of variables make firm recommendations technically impossible. This information is intended as a general guide only.

Distributed By:

151 Memorial Drive, Unit H  
Shrewsbury, MA 01545  
Tel 888.792.2223  
[sales@plastixs.com](mailto:sales@plastixs.com)

**plastixs**®  
manufacturing solutions