

SMARTFLOW® Stainless Steel Manifolds with Low Profile Ports (NPT only)



Specifications

Material.....304 Stainless Steel
 Temperature Rating.....up to 250°F (121°C)
Maximum Working Pressure Ratings
 Gas (air, inert gas)125 psi
 Liquid (oil, water, benign fluids)250 psi



General Description

Smartflow® stainless steel manifolds are formed and welded from 304 stainless steel. The manifolds are 100% leak tested for quality assurance before shipping. Stainless steel manifolds with low profile ports offer an economical alternative to our conventional port manifolds.

Smartflow stainless steel manifolds are excellent for high-flow applications where chemical compatibility and corrosion-resistance are important. Manifold bodies are made from 1-1/2" or 2" square tube to allow maximum flow. Custom modifications are easily handled to provide the exact configuration you need.

Assembly

Smartflow® stainless steel manifolds are the platform for control of cooling water lines in many types of industrial process cooling. Flowmeters, Flow Regulators, Ball Valves, Quick Disconnect Fittings and more can be added to the manifolds to improve functionality and process control. See page 12 for ordering information.

Flowmeters and flow regulators are customarily assembled onto one side of parallel manifolds with flow direction into the return side of the manifold.

Model Number

	8	SL	-	16	-	2	-	2	-	A
Supply Threads										
1"NPT	8					3				
1-1/2"NPT	12					4				
Manifold Styles										
Single		SL				4				
Parallel		PSL				to				
						32				
						Total Number of Ports				

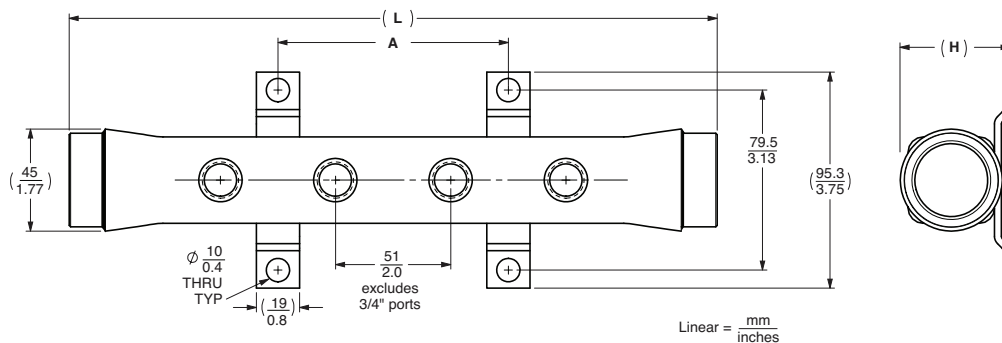
plastiXs
 manufacturing solutions

SMARTFLOW[®] Stainless Steel Manifolds with Low Profile Ports (NPT only)

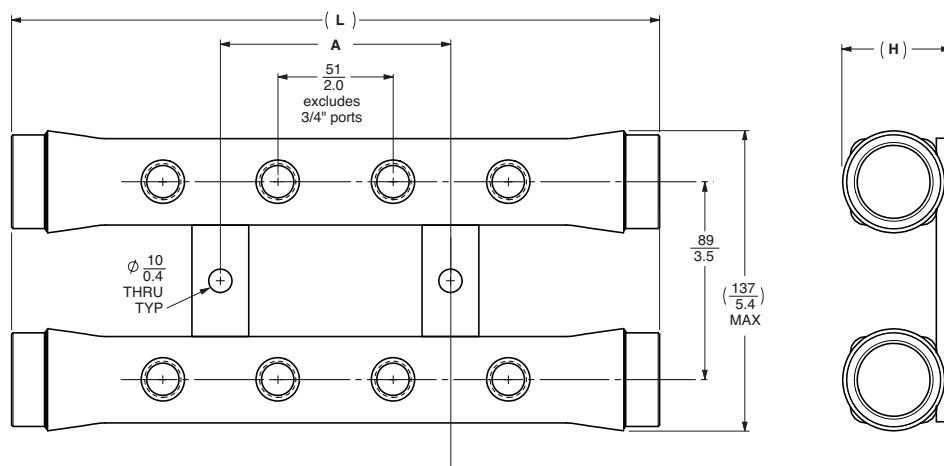
Model Numbers and Dimensions (3/8" & 1/2" NPT ports only)

	Single Manifolds	Parallel Manifolds	Dimension A	Dimension L	Dimension H
1" Inlet	8SL - 4 - □ - 2 - A	8PSL - 8 - □ - 2 - A	102mm / 4"	283mm / 11.13"	51mm 2" max.
	8SL - 6 - □ - 2 - A	8PSL - 12 - □ - 2 - A	203mm / 8"	384mm / 15.13"	
	8SL - 8 - □ - 2 - A	8PSL - 16 - □ - 2 - A	305mm / 12"	486mm / 19.13"	
	8SL - 10 - □ - 2 - A	8PSL - 20 - □ - 2 - A	406mm / 16"	587mm / 23.13"	
	8SL - 12 - □ - 2 - A	8PSL - 24 - □ - 2 - A	508mm / 20"	689mm / 27.13"	
	8SL - 14 - □ - 2 - A	8PSL - 28 - □ - 2 - A	610mm / 24"	791mm / 31.13"	
1-1/2" Inlet	8SL - 16 - □ - 2 - A	8PSL - 32 - □ - 2 - A	711mm / 28"	892mm / 35.13"	64mm 2.5" max.
	12SL - 4 - □ - 2 - A	12PSL - 8 - □ - 2 - A	102mm / 4"	283mm / 11.13"	
	12SL - 6 - □ - 2 - A	12PSL - 12 - □ - 2 - A	203mm / 8"	384mm / 15.13"	
	12SL - 8 - □ - 2 - A	12PSL - 16 - □ - 2 - A	305mm / 12"	486mm / 19.13"	
	12SL - 10 - □ - 2 - A	12PSL - 20 - □ - 2 - A	406mm / 16"	587mm / 23.13"	
	12SL - 12 - □ - 2 - A	12PSL - 24 - □ - 2 - A	508mm / 20"	689mm / 27.13"	
	12SL - 14 - □ - 2 - A	12PSL - 28 - □ - 2 - A	610mm / 24"	791mm / 31.13"	
	12SL - 16 - □ - 2 - A	12PSL - 32 - □ - 2 - A	711mm / 28"	892mm / 35.13"	

□ = port thread size [3 = 3/8"NPT(F) or 4 = 1/2"NPT(F)]



Single Manifold



Parallel Manifold