



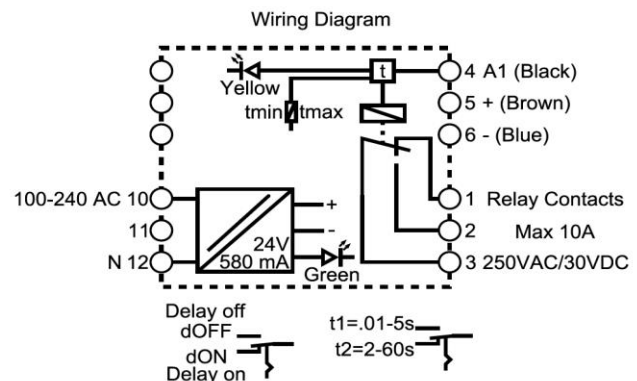
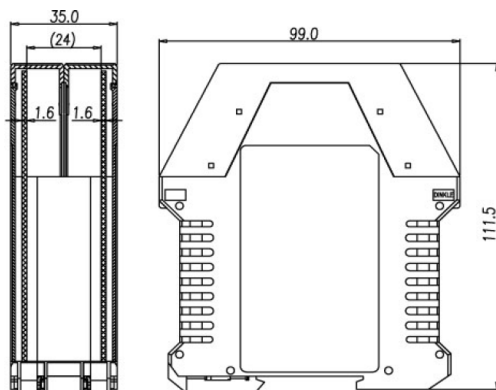
EGI-RLC-TD - Rechner Logic Controller Power Supply, Logic, Relay Output

- Connect one 2, 3, or 4-wire sensor with NPN or PNP output. When connecting an antivalent sensor (4-wire), either output can be connected.
- One relay output (SPDT) with adjustable ON delay or OFF delay

Certificates: **ETL Recognized** **RoHS** **CE**

Technical Data

| | |
|---------------------------------|---|
| Type | EGI-RLC-TD |
| Article Number | NA7002 |
| Connection Diagram | see below |
| Operating Voltage (U_b) | 100 to 240 VAC 50/60 Hz |
| Output Voltage (U_s) | 24 VDC |
| Output Current (Max) (I_s) | 580 mA |
| No-load Current (I_b) | typ. < 50mA |
| Output Function | 1 x relay output (SPDT) with adjustable ON delay or OFF delay (0.1 to 60 seconds) |
| Relay Contact (Max) | 250 VAC / 30 VDC 10 A |
| Actuating Signal (Input Signal) | PNP or NPN |
| Permitted Ambient Temperature | -25 ... + 40 °C |
| IP Rating | IP20 terminals / IP30 housing |
| Connection | screw terminals |



All Specifications are subject to change without notice (September 2014)