



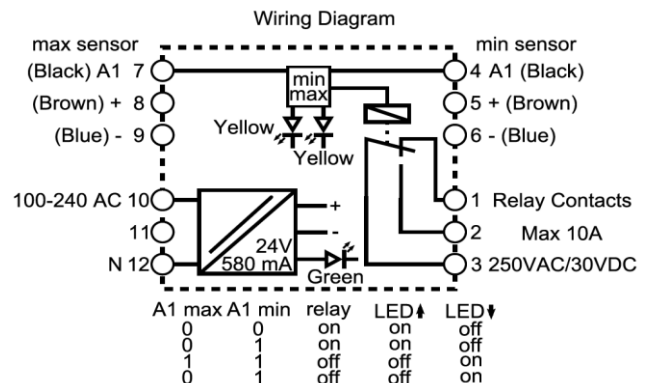
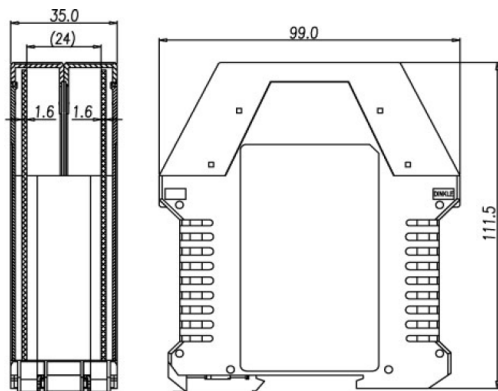
EGI-RLC-MM - Rechner Logic Controller Power Supply, Logic, Relay Output

- Connect two 2, 3, or 4-wire sensors with normally open NPN or PNP outputs. When connecting an antivalent sensor (4-wire), the normally open output must be connected.
- One relay output (SPDT) with min-max logic

Certificates: **ETL Recognized** **RoHS** **CE**

Technical Data

Type	EGI-RLC-MM
Article Number	NA7003
Connection Diagram	see below
Operating Voltage (U_b)	100 to 240 VAC 50/60 Hz
Output Voltage (U_s)	24 VDC
Output Current (Max) (I_s)	580 mA
No-load Current (I_b)	typ. < 50mA
Output Function	1 x relay output (SPDT) with min-max logic
Relay Contact (Max)	250 VAC / 30 VDC 10 A
Actuating Signal (Input Signal)	PNP or NPN
Permitted Ambient Temperature	-25 ... + 40 °C
IP Rating	IP20 terminals / IP30 housing
Connection	screw terminals



All Specifications are subject to change without notice (September 2014)