

# VAC TRUCK HYDROEXCAVATION & TRENCHING HOSES



## TIGER-TR1™ SERIES

Heavy Duty SBR Wet or Dry  
Material Handling Hose

### CONSTRUCTION:

SBR rubber tube with rigid PVC helix

### SERVICE TEMPERATURE:

-40°F (-40°C) to 150°F (+65°C)

### GENERAL APPLICATIONS:

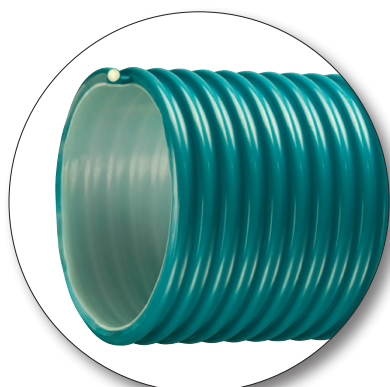
- Fly ash collection
- Hydro excavation
- Industrial vacuum equipment
- Material handling-heavy duty abrasive
- Milling machine scrap recovery
- Rock, gravel, sand and crushed concrete
- vacuuming
- Sewer truck boom hose
- Shot blast recovery
- Slurry handling

### AVAILABLE SIZES

|      | 1-1/2" | 2" | 2-1/2" | 3" | 4" | 5" | 6" | 8" |
|------|--------|----|--------|----|----|----|----|----|
| TR1™ | X      | X  | X      | X  | X  | X  | X  | X  |



[-more info-](#)



## AMPH™ SERIES

### AMPHIBIAN™ Series

Heavy Duty Polyurethane Lined Wet  
or Dry Material Handling Hose

### CONSTRUCTION:

PVC cover w/polyurethane liner & rigid PVC helix

### SERVICE TEMPERATURE:

-40°F (-40°C) to 150°F (+65°C)

### GENERAL APPLICATIONS:

- Agricultural dry fertilizers
- Air seeder lines
- Fly ash collection
- Hydro excavation
- Industrial vacuum equipment
- Material handling-heavy duty abrasive
- Milling machine scrap recovery
- Rock, gravel sand and crushed concrete
- vacuuming
- Sewer truck boom hose

### AVAILABLE SIZES

|       | 4" | 5" | 6" | 8" |
|-------|----|----|----|----|
| AMPH™ | X  | X  | X  | X  |



[-more info-](#)



## AMPH-SLR™ SERIES

Heavy Duty Polyurethane Lined Wet or  
Dry Material Handling Hose with High  
UV Resistance

### CONSTRUCTION:

PVC cover w/polyurethane liner, PVC helix and  
grounding wire.

### SERVICE TEMPERATURE:

-40°F (-40°C) to 150°F (+65°C)

### GENERAL APPLICATIONS:

- Hydro excavation
- Industrial vacuum equipment
- Material handling-heavy duty abrasive
- Sewer truck boom hose
- Slurry handling

### AVAILABLE SIZES

|           | 3" | 4" | 6" | 8" |
|-----------|----|----|----|----|
| AMPH-SLR™ | X  | X  | X  | X  |



[-more info-](#)

