

Part A Male Adapters – Female Thread

Item Code	Size
5AXX	1/2"
7AXX	3/4"
10AXX	1"
12AXX	1-1/4"
15AXX	1-1/2"
20AXX	2"
25AXX	2-1/2"
30AXX	3"
40AXX	4"
50AXX	5"
60AXX	6"



BSP and BST threads available on request.

Available in 8" and 10" sizes. Please call for more information.

Part D Female Couplers – Female Thread

Item Code	Size
5DXX	1/2"
7DXX	3/4"
10DXX	1"
12DXX	1-1/4"
15DXX	1-1/2"
20DXX	2"
25DXX	2-1/2"
30DXX	3"
40DXX	4"
50DXX	5"
60DXX	6"



BSP and BST threads available on request.

Aluminum couplers are standard with stainless-steel handles. Brass handles available on request.

Available in 8" and 10" sizes. Please call for more information.

Part B Female Couplers – Male Thread

Item Code	Size
5BXX	1/2"
7BXX	3/4"
10BXX	1"
12BXX	1-1/4"
15BXX	1-1/2"
20BXX	2"
25BXX	2-1/2"
30BXX	3"
40BXX	4"
50BXX	5"
60BXX	6"



BSP and BST threads available on request.

Aluminum couplers are standard with stainless-steel handles. Brass handles available on request.

Available in 8" and 10" sizes. Please call for more information.

Part E Male Adapters – Hose Shank

Item Code	Size
5EXX	1/2"
7EXX	3/4"
10EXX	1"
12EXX	1-1/4"
15EXX	1-1/2"
20EXX	2"
25EXX	2-1/2"
†30EXX	3"
†40EXX	4"
50EXX	5"
60EXX	6"
† 3" and 4" aluminum have machined shanks.	



Available in 8" and 10" sizes. Please call for more information.

Part C Female Couplers – Hose Shank

Item Code	Size
5CXX	1/2"
7CXX	3/4"
10CXX	1"
12CXX	1-1/4"
15CXX	1-1/2"
20CXX	2"
25CXX	2-1/2"
†30CXX	3"
†40CXX	4"
50CXX	5"
60CXX	6"
† 3" and 4" aluminum have machined shanks.	



Aluminum couplers are standard with stainless-steel handles. Brass handles available on request.

Available in 8" and 10" sizes. Please call for more information.

Part F Male Adapters – Male Thread

Item Code	Size
5FXX	1/2"
7FXX	3/4"
10FXX	1"
12FXX	1-1/4"
15FXX	1-1/2"
20FXX	2"
25FXX	2-1/2"
30FXX	3"
40FXX	4"
50FXX	5"
60FXX	6"



BSP and BST threads available on request.

Available in 8" and 10" sizes. Please call for more information.

METAL SELECTION: XX indicates that a metal selection must be designated when ordering: **CB** = Cast Brass; **AL** = Aluminum; **SS** = 316 Stainless Steel; **DI** = Ductile Iron; **PP** = Polypropylene; **BR** = Forged Brass; **HA** = Hardcoat Aluminum. Also available in Monel, Hastalloy C and Carpenter 20®.

Note: 1/2-, 8-, and 10-inch parts are not interchangeable with other cam and groove couplings.

Dust Plug For Use With Couplers



*Not to be used in
pressure applications.*

Available in 8" and 10" sizes.
Please call for more information.

Item Code	Size
5DPXX	1/2"
7DPXX	3/4"
10DPXX	1"
12DPXX	1-1/4"
15DPXX	1-1/2"
20DPXX	2"
25DPXX	2-1/2"
30DPXX	3"
40DPXX	4"
50DPXX	5"
60DPXX	6"

Dust Cap For Use With Adapters



*Not to be used in
pressure applications.*

Aluminum couplers are standard
with stainless-steel handles. Brass
handles available on request.

Available in 8" and 10" sizes.
Please call for more information.

Item Code	Size
5DCXX	1/2"
7DCXX	3/4"
10DCXX	1"
12DCXX	1-1/4"
15DCXX	1-1/2"
20DCXX	2"
25DCXX	2-1/2"
30DCXX	3"
40DCXX	4"
50DCXX	5"
60DCXX	6"

METAL SELECTION: XX indicates that a metal selection must be designated when ordering: **CB** = Cast Brass; **AL** = Aluminum; **SS** = 316 Stainless Steel; **DI** = Ductile Iron; **PP** = Polypropylene; **BR** = Forged Brass; **HA** = Hardcoat Aluminum. Also available in Monel, Hastalloy C and Carpenter 20®.

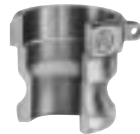
Note: 1/2-, 8-, and 10-inch parts are not interchangeable with other cam and groove couplings.

Couplings For Butt (BW) or Socket (SW) Weld

Specify tube size or pipe schedule.

Adapters

Butt Weld	Socket Weld	Size
10ABWXX	10ASWXX	1"
15ABWXX	15ASWXX	1-1/2"
20ABWXX	20ASWXX	2"
25ABWXX	25ASWXX	2-1/2"
30ABWXX	30ASWXX	3"
40ABWXX	40ASWXX	4"
50ABWXX	50ASWXX	5"
60ABWXX	60ASWXX	6"



Socket weld illustrated.

Available in 8" and 10" sizes.
Please call for more information.

Couplers

Butt Weld	Socket Weld	Size
10DBWXX	10DSWXX	1"
15DBWXX	15DSWXX	1-1/2"
20DBWXX	20DSWXX	2"
25DBWXX	25DSWXX	2-1/2"
30DBWXX	30DSWXX	3"
40DBWXX	40DSWXX	4"
50DBWXX	50DSWXX	5"
60DBWXX	60DSWXX	6"



Socket weld illustrated.

Available in 8" and 10" sizes.
Please call for more information.

METAL SELECTION: XX indicates that a metal selection must be designated when ordering: **BR** = Forged Brass; **AL** = Aluminum; **SS** = 316 Stainless Steel.