

Antistatic polyurethane hose, super-light weight, microbe resistant + flame-retardant

### Applications

- flexible hose/ ducting for gases and for abrasive dust, powder, fibers
- extraction unit, dust collection systems, filter system, oil mist extraction
- extraction arm
- chemical industry: chemical vapors, vapor return hose at loading arm, paint steam, spray mist extraction
- explosion hazard area
- animal stall, animal shed: barn ventilation
- bus, utility vehicle, caravan/ trailer, mobile home/ camper/ RV, boat, ship/ vessel/ marine, yacht: ventilation, heating
- clean room ventilation, semiconductor production machine
- bellows, compensators

### Properties

- super-light weight
- highly flexible + compressible 3:1
- abrasion-resistant
- microbe resistant
- good resistance to oil, gasoline, and chemicals
- very good low temperature flexibility
- flame-retardant according to: UL94-HB
- flame-retardant according to: DIN 4102-B1
- permanently antistatic wall: in accordance with ISO 8031 electrical and surface resistance  $<10^9 \Omega$
- in accordance with ATEX 2014/34/EU (1999/92/EC) and German TRGS 727: aspiration of combustible dust (zone 22 inside), for conveying of non-flammable liquids, for use in zone 1 and 2 (gases)
- conforms to the safety regulations of the German Wood Trade Association
- according to DIN 26057 Type 1
- conforms to RoHS guideline

- 40°F to 195°F
- short time to 255°F

### Design, material

patented PROTAPE® tape hose

- spring steel wire integrated in the wall
- wall: permanently antistatic premium ester-polyurethane (Pre-PUR®)
- wall thickness 0.02 inch approximate

### Delivery variants

- further diameters and lengths available on request
- transparent (standard)
- special colors: partially colored, completely colored
- customer-specific branding
- ID 1"/25mm – 12"/305mm compressed packed in poly bag (low transportation cost / risk, minimum storage size), ID315 – 500mm not compressed

### Temperature range

I.D. in / mm	O.D. in	Pressure DIN 26057 (50% Elongation) psi	Vacuum DIN 26057 (axially fixed) inHG	Bending Radius in	Weight lbs./ft	Stock length ft	Further production lengths ft	Order No.
1.5 / 38	1.81	9.15 (27.05)	7.23 (21.41)	1.06	0.150	25 50	-	301-0038-0000
- / 40	1.89	8.70 (25.65)	6.94 (19.34)	1.10	0.155	-	25 50	301-0040-0000
1.75 / 44-45	2.09	7.75 (22.85)	6.20 (15.36)	1.20	0.170	-	25 50	301-0045-0000
2 / 50-51	2.28	6.95 (20.60)	5.02 (25.10)	1.30	0.190	25 50	-	301-0050-0000
2.36 / 60	2.68	5.85 (17.20)	4.28 (17.42)	1.50	0.230	-	25 50	301-0060-0000
2.5 / 63-65	2.87	5.35 (15.90)	3.84 (14.91)	1.57	0.240	25 50	-	301-0065-0000
- / 70	3.07	5.00 (14.70)	3.69 (12.99)	1.69	0.255	-	25 50	301-0070-0000
3 / 75-76	3.27	4.70 (13.80)	3.40 (11.37)	1.77	0.275	25 50	-	301-0075-0000
- / 80	3.46	4.40 (12.90)	3.25 (10.04)	1.89	0.295	-	25 50	301-0080-0000
3.5 / 89-90	3.86	3.90 (11.45)	2.81 (7.97)	2.09	0.330	25 50	-	301-0090-0000
4 / 100-102	4.25	3.55 (10.35)	1.62 (8.86)	2.28	0.345	25 50	-	301-0100-0000
- / 110	4.65	3.20 (9.45)	1.48 (7.38)	2.50	0.375	-	25 50	301-0110-0000
4.5 / 114-115	4.84	3.05 (9.00)	1.48 (6.79)	2.58	0.390	25 50	-	301-0115-0000
4.72 / 120	5.04	2.95 (8.65)	1.33 (6.20)	2.68	0.410	-	25 50	301-0120-0000
5 / 125-127	5.24	2.85 (8.25)	1.33 (5.76)	2.78	0.425	25 50	-	301-0125-0000
- / 130	5.43	2.70 (8.00)	1.18 (5.32)	2.87	0.445	-	25 50	301-0130-0000
5.5 / 140	5.83	2.55 (7.40)	1.18 (4.58)	3.07	0.475	25 50	-	301-0140-0000
6 / 150-152	6.22	2.30 (6.90)	1.03 (3.99)	3.27	0.510	25 50	-	301-0150-0000
6.3 / 160	6.61	2.20 (6.45)	1.03 (3.40)	3.46	0.545	-	25 50	301-0160-0000
6.5 / 165	6.81	2.20 (6.30)	1.03 (3.25)	3.56	0.560	-	25 50	301-0165-0000

Positive and negative pressure ratings are the recommended maximum operating values. Products can be manufactured to meet higher operating values upon request. The bend radius is calculated from the center of the hose in an arched position. Additional information at [www.norres.com](http://www.norres.com). NORRES reserves the right to modify technical data at any time. Technical data based on tests at 68°F and are approx. values. Proper use and maintenance of NORRES hoses is the sole responsibility of purchaser and ultimate user of the product. The individual conditions, applications and the number of variables make firm recommendations technically impossible. This information is intended as a general guide only.

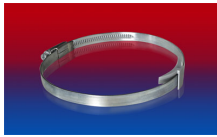
I.D. in / mm	O.D. in	Pressure DIN 26057 (50% Elongation) psi	Vacuum DIN 26057 (axially fixed) inHG	Bending Radius in	Weight lbs./ft	Stock length ft	Further production lengths ft	Order No.
7 / 178-180	7.40	1.95 (5.75)	0.89 (2.66)	3.86	0.605	25 50	-	301-0180-0000
8 / 200-203	8.19	1.75 (5.20)	0.74 (3.25)	4.25	0.690	25 50	-	301-0200-0000
- / 225	9.21	1.60 (4.65)	0.59 (2.36)	4.78	0.780	-	25	301-0225-0000
- / 250	10.20	1.45 (4.15)	0.59 (1.92)	5.35	0.860	-	25	301-0250-0000
10 / 254	10.35	1.40 (4.05)	0.59 (1.77)	5.65	0.875	25	-	301-0254-0000
11 / 280	11.38	1.25 (3.70)	0.59 (1.48)	5.87	0.960	-	25	301-0280-0000
- / 300	12.17	1.15 (3.50)	0.44 (1.18)	6.26	1.140	-	25	301-0300-0000
12 / 305	12.40	1.15 (3.40)	0.44 (1.18)	6.40	1.165	25	-	301-0305-0000
- / 315	12.80	1.10 (3.25)	0.44 (1.03)	6.59	1.205	-	25	301-0315-0000
- / 350	14.17	1.00 (2.95)	0.44 (0.74)	7.28	1.345	-	25	301-0350-0000
14 / 356	14.41	1.00 (2.90)	0.44 (0.74)	7.48	1.410	25	-	301-0356-0000
- / 400	16.14	0.85 (2.60)	0.44 (0.59)	8.27	1.520	-	25	301-0400-0000
- / 450	18.11	0.80 (2.30)	0.30 (0.44)	9.25	1.695	-	25	301-0450-0000
- / 500	20.08	0.75 (2.10)	0.30 (0.44)	10.24	1.870	-	25	301-0500-0000

Positive and negative pressure ratings are the recommended maximum operating values. Products can be manufactured to meet higher operating values upon request. The bend radius is calculated from the center of the hose in an arched position. NORRES reserves the right to modify technical data at any time. Technical data based on tests at 68°F and are approx. values. Proper use and maintenance of NORRES hoses is the sole responsibility of purchaser and ultimate user of the product. The individual conditions, applications and the number of variables make firm recommendations technically impossible. This information is intended as a general guide only. Additional information at [www.norres.com/us/technology-us/](http://www.norres.com/us/technology-us/)

#### Accessories



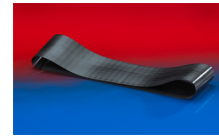
CLAMP 212


CLAMP 210 BRIDGE  
CLAMP


CLAMP 217



CLAMP 213



CONNECT 228



CONNECT 223



CONNECT 270-271

Distributed By: **plastixs**<sup>®</sup>  
manufacturing solutions

151 Memorial Drive, Suite H  
Shrewsbury, MA 01545  
888-792-2223

[www.plastixs.com](http://www.plastixs.com)  
[sales@plastixs.com](mailto:sales@plastixs.com)

Positive and negative pressure ratings are the recommended maximum operating values. Products can be manufactured to meet higher operating values upon request. The bend radius is calculated from the center of the hose in an arched position. Additional information at [www.norres.com](http://www.norres.com). NORRES reserves the right to modify technical data at any time. Technical data based on tests at 68°F and are approx. values. Proper use and maintenance of NORRES hoses is the sole responsibility of purchaser and ultimate user of the product. The individual conditions, applications and the number of variables make firm recommendations technically impossible. This information is intended as a general guide only.