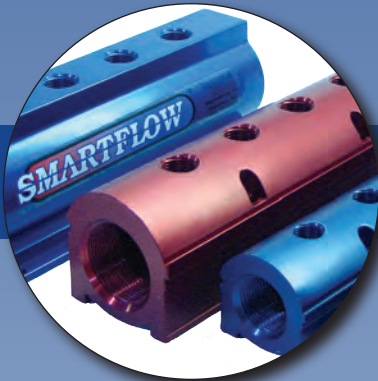


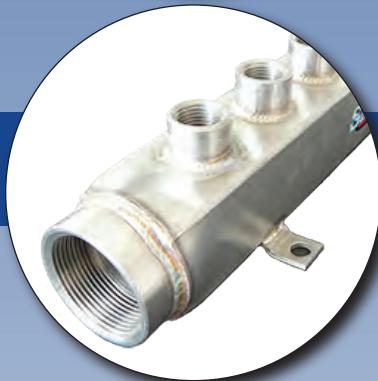
SMARTFLOW[®] Water Manifolds



SMARTFLOW[®] Aluminum Manifolds

SMARTFLOW[®] Aluminium Manifolds offer the highest quality, one-piece extrusion with no welds. Anodized for corrosion resistance, **SMARTFLOW[®]** manifolds provide years of trouble free service. - [more info](#)

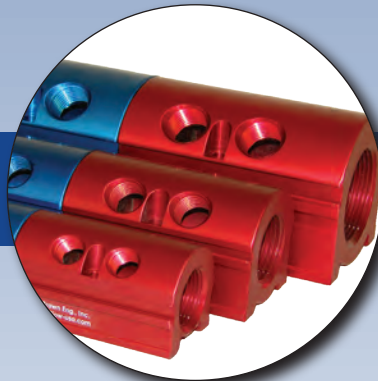
3/4", 1", 1.5" and 2" NPT(F) inlet/outlet available. Number of ports: 4, 6, 8, 10, 12 & 16



SMARTFLOW[®] Stainless Steel Manifolds

SMARTFLOW[®] Conventional Stainless Steel Manifolds are excellent for high-flow applications where durability is important. - [more info](#)

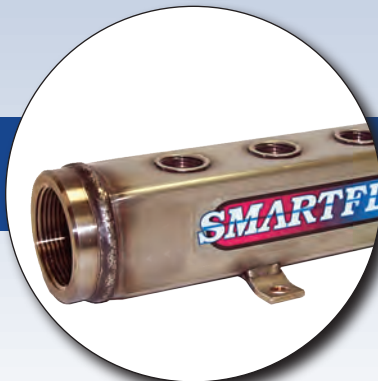
1" and 1.5" NPT(F) inlet/outlet available. Number of ports: 4, 6, 8, 10, 12 & 16



SMARTFLOW[®] Duoflow Manifolds

SMARTFLOW[®] Duoflow[™] Aluminum Manifolds are divided internally and anodized red on one end and blue on the other to denote supply and return on a single compact unit. - [more info](#)

3/4", 1" and 1.5" NPT(F) inlet/outlet available. Number of ports: 8, 12 & 16



SMARTFLOW[®] Stainless Steel w/Low Profile Ports

SMARTFLOW[®] Stainless Steel Manifolds with Low Profile Ports are suitable for a wide range of liquid handling applications. - [more info](#)

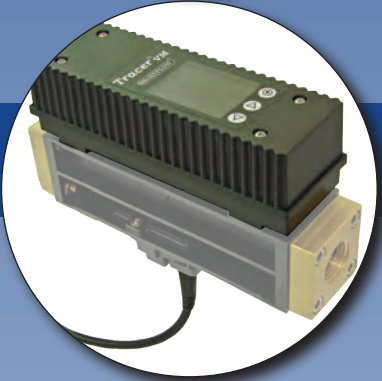
1" and 1.5" NPT(F) inlet/outlet available. Number of ports: 4, 6, 8, 10, 12 & 16

SMARTFLOW® Flowmeters



Tracer® Electronic Flowmeters

Electronic flowmeters with digital display 0-8 to 10-110 gpm with optional stainless steel bodies - [more info](#)



Tracer® VM Electronic Flowmeter w/User Interface

Programmable SPDT Switch, Analog Output and FCI (Flow Characteristic Indicator) Technology with New Totalizer Function - [more info](#)



Tracer® VM w/Bluetooth Interface

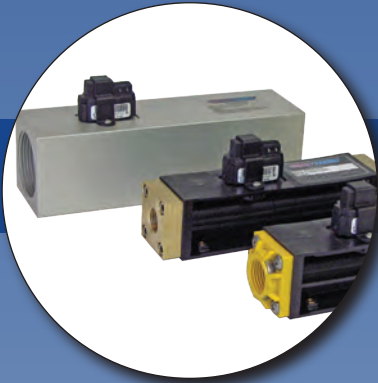
Tracer® VM Bluetooth Interface collects, transmits and saves data from Tracer® VM Base flowmeters installed in injection mold cooling circuits - [more info](#)



Tracer® Switching Electronic Flowmeters

Electronic Switching Flowmeters measure liquid flow rate and temperature while providing one programmable switching set point for high or low flow or temperature - [more info](#)

Flowmeters continued . . .



Tracer® VM Flowmeter

A non-display sensor that provides a 0.5 to 3.5 volt output for process temperature, and flow rate. Flow sensor technology is vortex shedding behind a bluff body. - [more info](#)



Mechanical Flowmeters

Mechanical flowmeters in many sizes with flow rates from 1.5 gpm to 150 gpm and optional temperature and pressure gauges. - [more info](#)



Hot Oil/Water Flowmeters

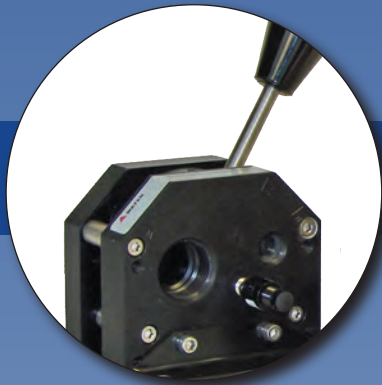
Flowmeters for hot oil/pressurized water (2-6 scale) or hot oil only (5-40 gpm scale) operating temperature up to 550°F, 150 psi - [more info](#)



Dr. Eddy® Flowmeters

Dr. Eddy® diagnoses flow condition using Fluid Characteristic Indication (FCI) Technology to achieve turbulent flow and minimize water usage - [more info](#)

SMARTFLOW® Swap Valve



Swap Valve® (Aluminum)

- Model A-A includes Check Valve
- Model L-A includes Check Valve and Locking Pin - [more info](#)



Swap Valve® (Molded Body)

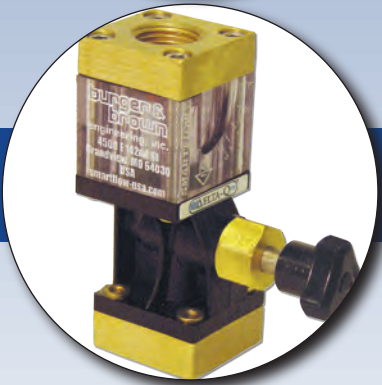
- Model A-A includes Check Valve
- Model L-A includes Check Valve and Locking Pin
- 1" Model Only - [more info](#)

SMARTFLOW® Flow Regulators



Brass Flow Regulators

SMARTFLOW® Brass Flow Regulators - Unique, leak-free, single point manual flow control. - [more info](#)



Delta Q® Flow Regulators

SMARTFLOW® Delta-Q® Flow Regulator is a low-cost precision flow regulator module that can be used in conjunction with other SMARTFLOW® components. - [more info](#)

SMARTFLOW® Mold Temp. Regulators

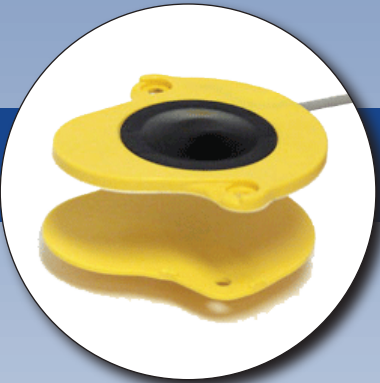


SMARTFLOW® Mold Temperature Regulator

The SMARTFLOW® Mold Temperature Regulator effectively controls mold cooling water temperatures between 80°F and 120°F (27°C and 49°C) to maintain a steady mold temperature. - [more info](#)

Molding & Tooling Components - **SMARTFLOW®**

SMARTFLOW® Mold Protective Limit Switches



Global Thinswitch

SMARTFLOW® Global Liquid Resistant Thinswitch (3mm/4mm height) for use with european standard molds - [more info](#)



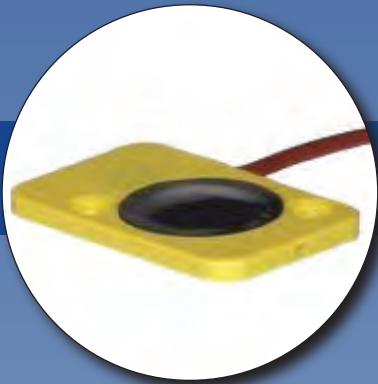
Thinswitch® Limit Switch

SMARTFLOW® Thinswitch® Limit Switch verifies ejector plate return before closing the mold. - [more info](#)

Mold Protective Limit Switches Continued. . .

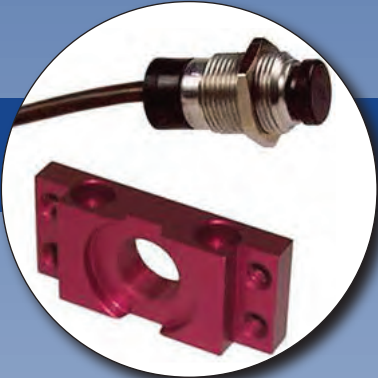
SMARTFLOW® Mold Protective Limit Switches

Continued



Liquid Resistant Thinswitch

SMARTFLOW® Thinswitch® Liquid Resistant Limit Switch verifies ejector plate return before closing the mold for areas where water or oil spray is present. - [more info](#)



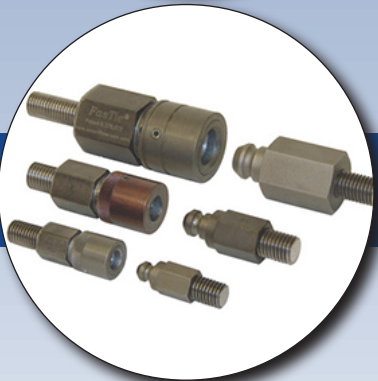
Versaswitch™ Limit Switch

SMARTFLOW® Versaswitch™ Limit Switch installs into an injection mold to indicate location of the core, preventing tool damage. - [more info](#)



Smartlock® Slide Retainer & Limit Switch

SMARTFLOW® Smartlock® Slide Retainer and Limit Switch provide switching and slide retaining in one package. - [more info](#)



FasTie® Quick Ejector Tie-In System

SMARTFLOW® FasTie Quick Ejector Tie-In System quickly “ties-in” the mold ejector plate to the press ejection system in an injection molding press, dramatically reducing mold change time. - [more info](#)