

EPIC® INDUSTRIAL CONNECTORS

For Hot Runner Controls, Molds, Robots, Machines, Accessories, Data, Etc.

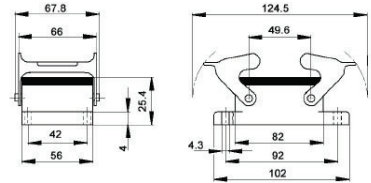
www.plastixs.com

EPIC® HA 32 Series Housings, Hoods & Inserts



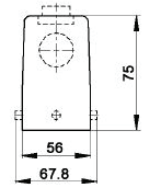
Housings - Panel Mount

Part #	Description
PLX-10.4720	Metal Housing, Double Lever



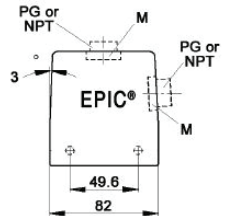
Hoods (order Strain Relief Gland separately)

Part #	Description
PLX-10.5820	Top Entry, Double Lever
PLX-10.5760	Side Entry, Double Lever
PLX-10.5830	Top Entry, Double Lever
PLX-10.5770	Side Entry, Double Lever



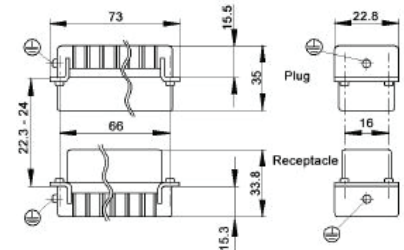
SKINTOP® Straight Strain Relief Glands

Part #	Thread (M)	Wire O.D.
PLX-S1121	PG-21	0.521"-0.709"
PLX-S1129	PG-29	0.551"-0.984"



EPIC® A Inserts (16 contacts + ⊕)

Part #	Description
PLX-10.5300	Plug Insert, Screw Terminated #1-16
PLX-10.5310	Receptacle Insert, Screw Terminated #1-16
PLX-10.5400	Plug Insert, Screw Terminated #17-32
PLX-10.5410	Receptacle Insert, Screw Terminated #17-32



All dimensions are in mm.

EPIC® D Inserts (25 contacts + ⊕)

Part #	Description
PLX-11.2833	Plug Insert, Screw Terminated
PLX-11.2823	Receptacle Insert, Screw Terminated



View from Cable Side

