

EPIC® INDUSTRIAL CONNECTORS

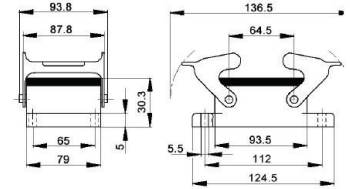
For Hot Runner Controls, Molds, Robots, Machines, Accessories, Data, Etc.

www.plastixs.com

EPIC® HB 32 Series Housings, Hoods & Inserts

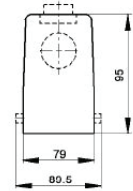
Housings - Panel Mount

<u>Part #</u>	<u>Description</u>
PLX-10.1320	Metal Housing, Double Lever



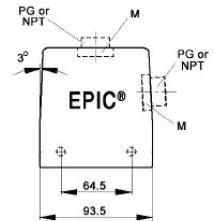
Hoods (order Strain Relief Gland separately)

<u>Part #</u>	<u>Description</u>
PLX-10.1340	Top Entry, Double Lever
PLX-10.1360	Side Entry, Double Lever



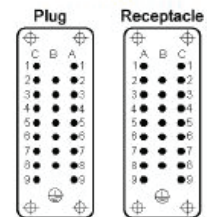
SKINTOP® Straight Strain Relief Glands

<u>Part #</u>	<u>Thread (M)</u>	<u>Wire O.D.</u>
PLX-S1129	PG-29	0.521"-0.709"
PLX-S1229	PG-29	0.433"-0.787"
PLX-S1136	PG-36	0.945"-1.260"
PLX-S1236	PG-36	0.669"-1.024"



EPIC® E Inserts (16 contacts + ⊥)

<u>Part #</u>	<u>Description</u>
PLX-10.1940	Plug Insert, Screw Terminated #1-16
PLX-10.1950	Receptacle Insert, Screw Terminated #1-16
PLX-10.2020	Plug Insert, Screw Terminated #17-32
PLX-10.2030	Receptacle Insert, Screw Terminated #17-32



Full Line EPIC®
Industrial Connectors
Distributor

call us for part #'s not listed