



# Kuriyama of America, Inc.

## ***Industrial Hose & Couplings For Septic, Wastewater & Irrigation***

**Featuring  
Products by Tigerflex™,  
Alfagomma®, Piranha® &  
KOA Couplings & Accessories™**



151 Memorial Drive, Suite H Shrewsbury • MA • 01545

888-792-2223

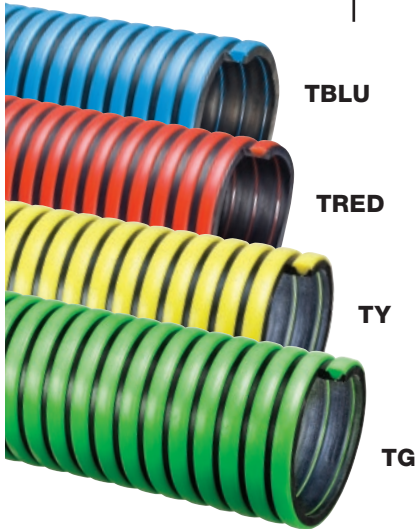
[www.plastixs.com](http://www.plastixs.com) • [sales@plastixs.com](mailto:sales@plastixs.com)

The trademarks contained in this publication are trademarks of Kuriyama of America, Inc.  
The "Alfagomma" trademark contained in this publication is a registered trademark of Alfagomma S.p.A.  
The "Tigerflex" design trademarks contained in this publication are trademarks of Tigers Polymer Corporation.



## Septic and Wastewater Hoses

### Tiger™ Green TG™ Series EPDM Suction Hose



### Tiger™ Yellow TY™ Series EPDM Suction Hose

### Tiger™ Red TRED™ Series EPDM Suction Hose

### Tiger™ Blue TBLU™ Series EPDM Suction Hose

#### GENERAL APPLICATIONS:

Agriculture liquid fertilizers  
Irrigation lines  
Liquid manure handling  
Marine bilge discharge  
Pumps, rental and construction dewatering  
Pumps, trash  
Septic and wastewater handling  
Water suction – standard duty



#### CONSTRUCTION:

EPDM tube with polyethylene helix.

#### SERVICE TEMPERATURE:

-40°F (-40°C) to 160°F (+71°C)

#### AVAILABLE SIZES:

	1"	1-1/4"	1-1/2"	2"	2-1/2"	3"	4"	6"
TG™	X	X	X	X	X	X	X	X
TY™	X	X	X	X		X	X	
TRED™				X		X	X	
TBLU™				X		X	X	

### KBEE™ Series

Polyethylene Liquid Suction and Wasterwater Hose



#### GENERAL APPLICATIONS:

Pumps, rental and construction dewatering  
Pumps, trash  
Septic and wastewater handling  
Water suction – standard duty

#### CONSTRUCTION:

Flexible polyethylene (LDPE) tube with polyethylene (LDPE) ribs and cuffed ends.

#### SERVICE TEMPERATURE:

-40°F (-40°C) to 150°F (+65°C)



#### AVAILABLE SIZES:

	2"	3"
KBEE™	X	X

### Tiger™ TSD™ Series

EPDM Fabric Reinforced Suction & Discharge Hose



#### GENERAL APPLICATIONS:

Agriculture liquid fertilizers  
Agri-foam systems  
Liquid manure handling  
Pumps, rental and construction dewatering  
Pumps, trash  
Septic and wastewater handling  
Suction and discharge  
Water suction – heavy duty

#### CONSTRUCTION:

Double-ply EPDM, polyester fabric reinforcement and polyethylene helix.

#### SERVICE TEMPERATURE:

-40°F (-40°C) to 160°F (+71°C)

#### AVAILABLE SIZES:

	1"	1-1/4"	1-1/2"	2"	3"
TSD™	X	X	X	X	X





## Vac Truck Hydroexcavation and Trenching Hoses

### Tiger™ TR1™ Series Heavy Duty SBR Wet or Dry Material Handling Hose



#### AVAILABLE SIZES:

	1-1/2"	2"	2-1/2"	3"	4"	5"	6"	8"
TR1™	X	X	X	X	X	X	X	X

#### GENERAL APPLICATIONS:

Fly ash collection  
Hydro excavation  
Industrial vacuum equipment  
Material handling – heavy duty abrasive  
Milling machine scrap recovery  
Rock, gravel, sand and crushed concrete  
vacuuming  
Sewer truck boom hose  
Shot blast recovery  
Slurry handling



#### CONSTRUCTION:

SBR rubber tube with rigid PVC helix.

#### SERVICE TEMPERATURE:

-40°F (-40°C) to 150°F (+65°C)

### Amphibian™ AMPH™ Series Heavy Duty Polyurethane Lined Wet or Dry Material Handling Hose



#### AVAILABLE SIZES:

	4"	5"	6"	8"
AMPH™	X	X	X	X

#### GENERAL APPLICATIONS:

Agricultural dry fertilizers  
Air seeder lines  
Fly ash collection  
Hydro excavation  
Industrial vacuum equipment  
Material handling – heavy duty abrasive  
Milling machine scrap recovery  
Rock, gravel, sand and crushed concrete  
vacuuming  
Sewer truck boom hose

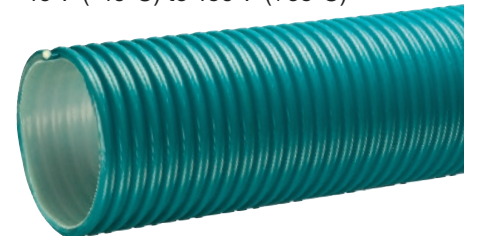
Shot blast recovery  
Slurry handling

#### CONSTRUCTION:

PVC cover with polyurethane liner and rigid PVC helix.

#### SERVICE TEMPERATURE:

-40°F (-40°C) to 150°F (+65°C)



#### TRIPLE RESISTANT LINER

Abrasion Resistant!  
Water Resistant!  
Oil Resistant!

### Tiger™ “HiTemp” THT™ Series Wire Reinforced EPDM Wet or Dry Material Handling Hose



#### AVAILABLE SIZES:

	4"	6"	8"
THT™	X	X	X

#### GENERAL APPLICATIONS:

Agricultural liquid fertilizer, Fly ash collection, Hydro excavation, Industrial vacuum equipment, Material chutes, Material handling – heavy duty abrasive, Milling machine scrap recovery  
Rock, gravel, sand and crushed concrete vacuuming, Sewer truck boom hose, Slurry handling

#### CONSTRUCTION:

EPDM tube and polyethylene helix with steel helical wire.

#### SERVICE TEMPERATURE:

-40°F (-40°C) to 220°F (+104°C)



**RATED UP TO  
220°F!**

## Water and Irrigation Hoses

### “Blue Water” BW™ Series Low Temperature PVC Suction Hose



**GENERAL APPLICATIONS:**  
Extreme cold conditions  
Pumps, rental and construction dewatering  
Pumps, trash  
Water suction – standard duty

**CONSTRUCTION:**  
PVC tube with rigid PVC helix.

**SERVICE TEMPERATURE:**  
-40°F (-40°C) to 150°F (+65°C)

#### AVAILABLE SIZES:

	3/4"	1"	1-1/4"	1-1/2"	2"	2-1/2"	3"	4"	5"	6"
BW™	X	X	X	X	X	X	X	X	X	X

### H™/J™/K™ Series Standard Duty PVC Suction Hose



**GENERAL APPLICATIONS:**  
Agricultural liquid fertilizer  
Air seeder lines  
Drain lines  
Irrigation lines  
Mining applications (MSHA)  
Pumps, rental and construction dewatering  
Pumps, trash  
Rock dusting  
Water suction – standard duty

**CONSTRUCTION:**  
PVC tube with rigid PVC helix.

**SERVICE TEMPERATURE:**  
-4°F (-20°C) to  
150°F (+65°C)

#### AVAILABLE SIZES:

	3/4"	1"	1-1/4"	1-1/2"	2"	2-1/2"	3"	4"	5"	6"	8"
H™	X	X	X	X	X	X	X	X	X	X	X
J™	X	X	X	X	X	X	X	X		X	X
K™	X	X	X	X	X	X	X	X		X	X



### W™ Series Heavy Duty PVC Liquid Suction Hose



**GENERAL APPLICATIONS:**  
Extreme cold conditions  
(Sizes 4"-16")  
Fish suction  
Gold dredging  
Pumps, rental and construction dewatering  
Pumps, trash

Slurry handling  
Water suction – heavy duty

**CONSTRUCTION:**  
PVC tube with rigid PVC helix.

**SERVICE TEMPERATURE:**  
1"-3": -4°F (-20°C) to 150°F (+65°C)  
4"-16": -40°F (-40°C) to 150°F (+65°C)

#### AVAILABLE SIZES:

	1"	1-1/4"	1-1/2"	2"	2-1/2"	3"	4"	5"	6"	8"	10"	12"	14"	16"
W™	X	X	X	X	X	X	X	X	X	X	X	X	X	X



## Water and Irrigation Hoses

### WST-SLR™ Series

**Heavy Duty PVC Fabric Reinforced Suction & Discharge Hose with High UV Resistance**



**GENERAL APPLICATIONS:**

Fish suction  
Irrigation lines  
Pumps, rental and construction dewatering  
Pumps, trash  
Suction and discharge  
Water suction – heavy duty

**CONSTRUCTION:**

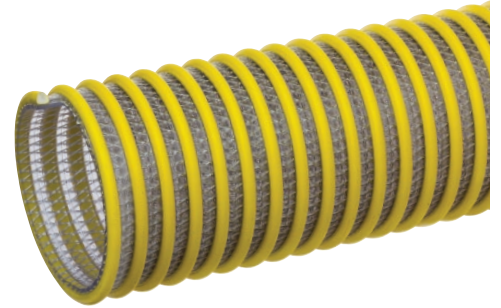
Double-ply PVC tube, polyester fabric reinforcement and rigid PVC helix.

**SERVICE TEMPERATURE:**

-4°F (-20°C) to 150°F (+65°C)

**AVAILABLE SIZES:**

	1-1/2"	2"	3"	4"	6"	8"
WST-SLR™	X	X	X	X	X	X



### WST™ Series

**Heavy Duty PVC Fabric Reinforced Suction & Discharge Hose**



**GENERAL APPLICATIONS:**

Fish suction  
Irrigation lines  
Pumps, rental and construction dewatering  
Pumps, trash  
Suction and discharge  
Water suction – heavy duty

**CONSTRUCTION:**

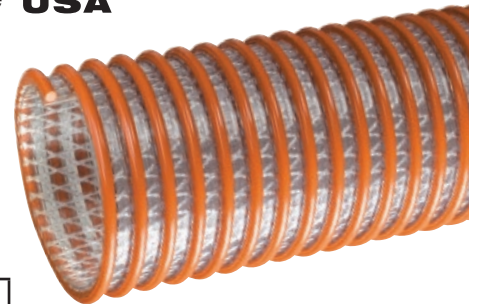
Double-ply PVC tube, polyester fabric reinforcement and rigid PVC helix.

**SERVICE TEMPERATURE:**

-4°F (-20°C) to 150°F (+65°C)

**AVAILABLE SIZES:**

	1-1/2"	2"	3"	4"	5"	6"	8"
WST™	X	X	X	X	X	X	X



### Cold Flex™ CF™ Series

**Extra Heavy Duty Low Temperature PVC Suction Hose**



**GENERAL APPLICATIONS:**

Extreme cold conditions  
Irrigation lines  
Material handling – standard duty  
Pumps, rental and construction dewatering  
Pumps, trash  
Slurry handling  
Water suction – heavy duty

**CONSTRUCTION:**

PVC tube with rigid PVC helix.

**SERVICE TEMPERATURE:**

-40°F (-40°C) to 150°F (+65°C)

**AVAILABLE SIZES:**

	1-1/2"	2"	2-1/2"	3"	4"	6"	8"
CF™	X	X	X	X	X	X	X





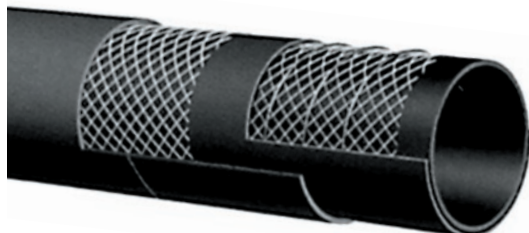
# Rubber Water Suction Hose PVC Water Discharge Hose



## Industrial Rubber Hose

### T202AA - 150 PSI EPDM

General Purpose Water S&D Hose



#### APPLICATIONS:

Suction and delivery of non-corrosive liquids for irrigation, construction, fertilizers and lasso acid solutions

#### COVER:

Black EPDM - abrasion and ozone-resistant.



#### REINFORCEMENT:

Spiralled high tensile textile c flexible steel helix wire.

Black EPDM.

#### TEMPERATURE RANGE:

-40°F (-40°C) to 212°F (+100°C)

#### AVAILABLE SIZES:

	1"	1-1/4"	1-1/2"	2"	2-1/2"	3"	3.5"	4"	5"	6"	8"	10"	12"
T202AA	X	X	X	X	X	X	X	X	X	X	X	X	X

### T253AA - 150 PSI EPDM

Layflat Water Discharge Hose



#### APPLICATIONS:

High pressure, 150 PSI lay flat type hose for general industrial construction and irrigation.

#### COVER:

Black EPDM - abrasion and ozone-resistant.



#### REINFORCEMENT:

High tensile textile cords.

#### TUBE:

Black EPDM.

#### TEMPERATURE RANGE:

-22°F (-30°C) to 176°F (+80°C)

#### AVAILABLE SIZES:

	1-1/2"	2"	2-1/2"	3"	4"	6"	6-5/8"	8"	10"	12"
T253AA	X	X	X	X	X	X	X	X	X	X

## Layflat Hose

### Premium PVC Drip Irrigation and Water Discharge Hose



#### APPLICATIONS:

Drip irrigation, Construction, Industrial, Agricultural

#### SERVICE TEMPERATURE:

-5°F (-20°C) to 170°F (+76°C)



#### CONSTRUCTION:

Features a balanced polyester yarn spiral wrap, longitudinal strength member and homogeneous PVC tube and cover to prevent separation.

#### AVAILABLE SIZES:

	1-1/2"	2"	2-1/2"	3"	4"	5"	6"	8"	10"	12"	14"	16"
VF	X	X	X	X	X	X	X	X	X	X	X	X



## Layflat Couplings

### EZ-Seal™ Leak Resistant Couplings

Ideally suited for layflat hoses

#### APPLICATIONS:

Agriculture, Chemicals, Petroleum,  
Construction, Material handling

#### CONSTRUCTION:

Aluminum; ASTM B85 Grade 380

#### FEATURES & BENEFITS:

Rubber seals - Help prevent leakage.  
Versatile - Suitable for use with  
other PVC and Rubber Hoses.



Pin Lug Hose Shank Couplings - Female Ends



Pin Lug Hose Shank Couplings - Male Ends

## Couplings & Accessories



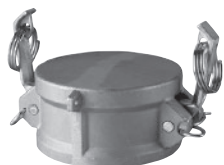
Aluminum Part E Male  
Adapter x Hose Shank



Aluminum Part C Female  
Coupler x Hose Shank



Aluminum Part DP  
Dust Plug



Aluminum Part DC  
Dust Cap



Kuri-Clamp™ Center  
Punch Clamps



Heavy Duty T-Bolt Clamps  
304 Stainless Steel Band,  
Bolt and Nut



TigerClamp™ Zinc Plated Carbon  
Steel Spiral Double Bolt Clamps  
(For Counterclockwise Spiral)  
Specially designed to fit Tigerflex® PVC  
suction hose. Also works well on rubber  
suction hose.



Double Bolt Zinc Plated  
Ductile Iron Hose Clamps



Polypropylene  
Ball Valves



Stainless Steel  
Combination Hose Nipples



Pin Lug Hose  
Shank Couplings



Round Hole Steel Strainer



Polypropylene Strainer

# “Ready-To-Go” Stock Length Hose Assemblies

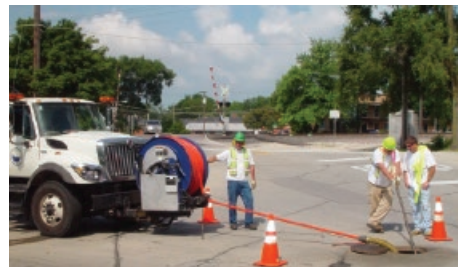


## Sewer Cleaning Hoses



### 2,500 PSI Series - SPOR

A yellow polyolefin tube, single high tensile synthetic fiber braid reinforcement and abrasion resistant orange polyether-urethane cover.



### 3,000 PSI Series - LLBU, HPBU

A yellow polyolefin tube, double high tensile synthetic fiber braid reinforcement and abrasion resistant blue polyether-urethane cover.



## Jetting/Lateral Line Hose



### HIGH BURST 4,000 PSI Series - SHBK, LHBK

A yellow seamless thermoplastic tube, double high tensile synthetic fiber braid reinforcement and abrasion resistant black polyether-urethane cover.



### 4,000 PSI Series - LLGR

A yellow seamless thermoplastic tube, double high tensile synthetic fiber braid reinforcement and abrasion resistant green polyether-urethane cover.



### 5,000 PSI Series - LLRD

A yellow seamless thermoplastic tube, double high tensile synthetic fiber braid reinforcement and abrasion resistant red polyether-urethane cover.



KSWBR0218