

FF Series Quote Request Form

Company:	Contact Name:
Ship To Address:	
Bill To Address:	
Email:	Phone:



MODEL FF4
4x4



MODEL FF6
6x6

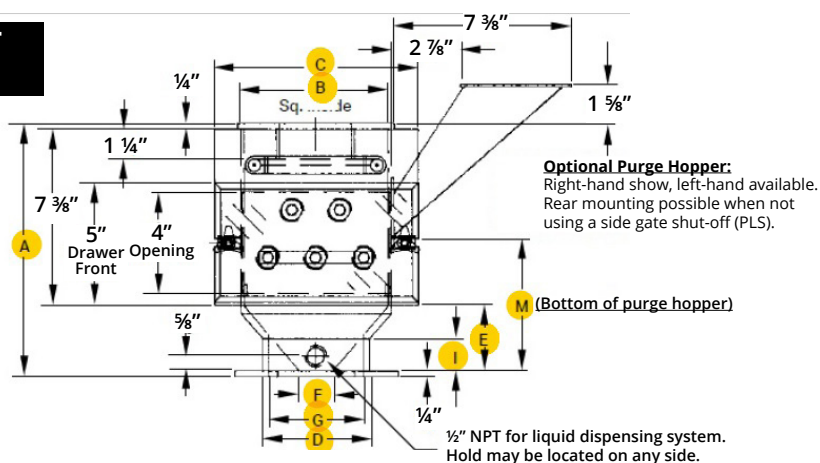


MODEL FF8
8x8

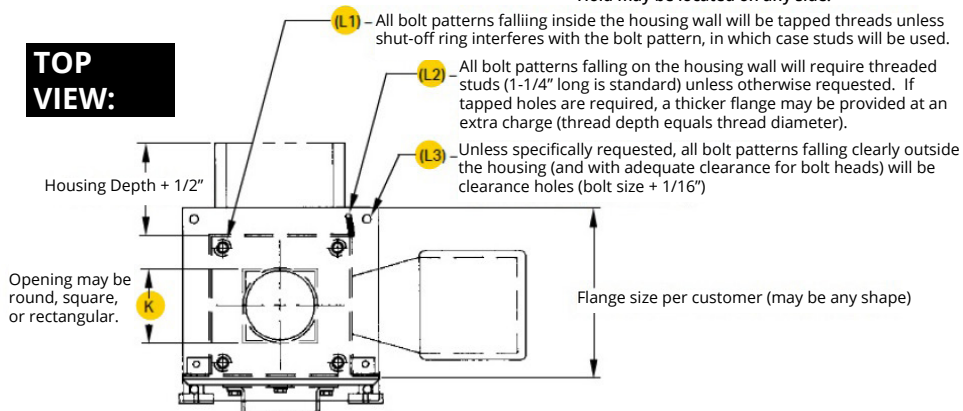


MODEL FF10
10x10

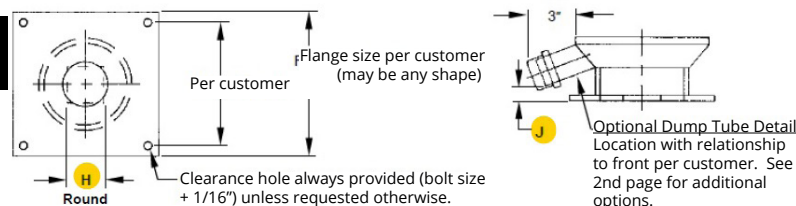
FRONT VIEW:



TOP VIEW:



BOTTOM VIEW:



Model	FF4	FF6	FF8	FF10
A	10 1/2	10 5/8	10 7/8	Varies
B	4x4	6x6	8x8	10x10
C	6 1/2	8 1/2	10 1/2	12 1/2
D	2 5/8	4 3/8	6 3/8	Varies
E	2 5/8	2 3/4	3	Varies

Choose Either F, G or H:

F (Minimum Round Opening)	7/8	1 3/4	3 1/8	Varies
G (Maximum Round Opening)	2 1/8	3 7/8	6	Varies
H (Minimum Square Opening)	1 1/2	2 3/4	4 1/4	Varies
I	1 1/32	1 5/16	1 1/32	Varies
K (Maximum Opening)	3	5	6 3/4	8 3/4

K Shape

K Shape	Round	Square	Rectangle
Flange	Yes	No	
Flange Shape	Round	Square	Rectangle
Flange Size			Front to Back Side to Side
Bolt Location	Top	Bottom	Top & Bottom

L1* (Housing Bolts)

Provide Drawing / Dimensions

L2* (Flange Plate Bolts on Housing Wall)

Provide Drawing / Dimensions

L3* (Flange Bolts Outside Housing)

Provide Drawing / Dimensions

FF Series Quote Request Form (continued)

Company:		Contact Name:	
Ship To Address:			
Bill To Address:			
Email:		Phone:	

ADDITIONAL OPTIONS:

- Check off additional options to add

☐

1. No-Spill™ Slide

Patented design allows for complete shut-off of product flow, reducing spillage.

☐

2. Purge Hopper:

Speeds cleaning of your equipment when changing color or compound without sacrificing magnetic protection.

☐

3. Dump Tube:

Allows operator to completely empty the drawer housing and material hopper of plastic after job is completed.

☐

4. Liquid Port:

Promotes quick addition of color additive into the resin. Port may also be used to hold temperature probe.

☐

5. Powder Seal Kit:

Provides a compression seal around the Slide Gate to prevent leaking of powdery materials.



FF Series Quote Request Form (continued)

Company:		Contact Name:	
Ship To Address:			
Bill To Address:			
Email:		Phone:	

QUICK-SHIP OPTIONS:

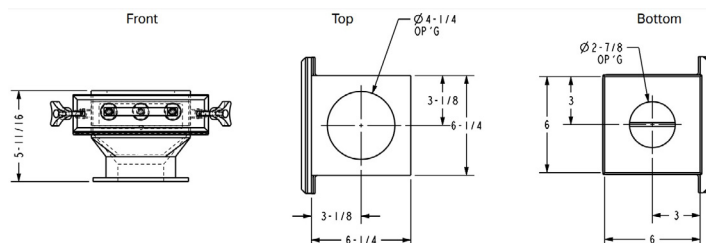
- Blank Flange Plates (top and bottom)

ITEM# DR1600-D

SELECT: ☐



Flange	Top Opening Diameter	Bottom Opening Diameter	Height	Package Quantity
6 x 6	4.25	2.875	5.6875	1

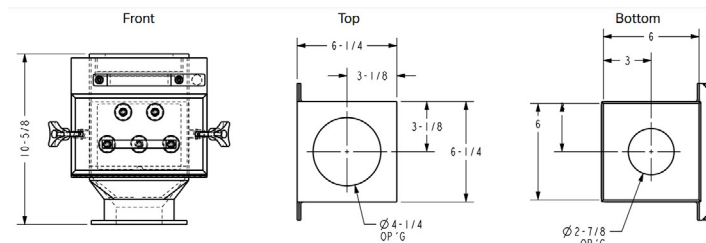


ITEM# DR2100-D

SELECT: ☐



Flange	Top Opening Diameter	Bottom Opening Diameter	Height	Package Quantity
6 x 6	4.25	2.875	10.625	1

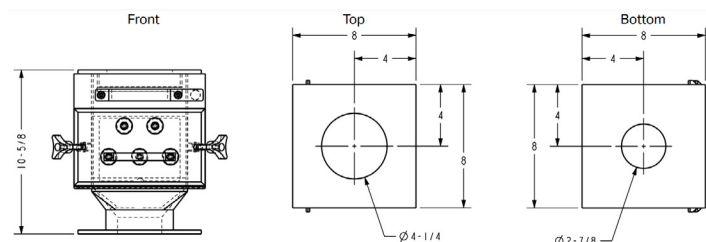


ITEM# DR2200-D

SELECT: ☐



Flange	Top Opening Diameter	Bottom Opening Diameter	Height	Package Quantity
8 x 8	4.25	2.875	10.625	1



ITEM# DR3500-D

SELECT: ☐



Flange	Top Opening Diameter	Bottom Opening Diameter	Height	Package Quantity
8 x 8	6	5.5	10.875	1

