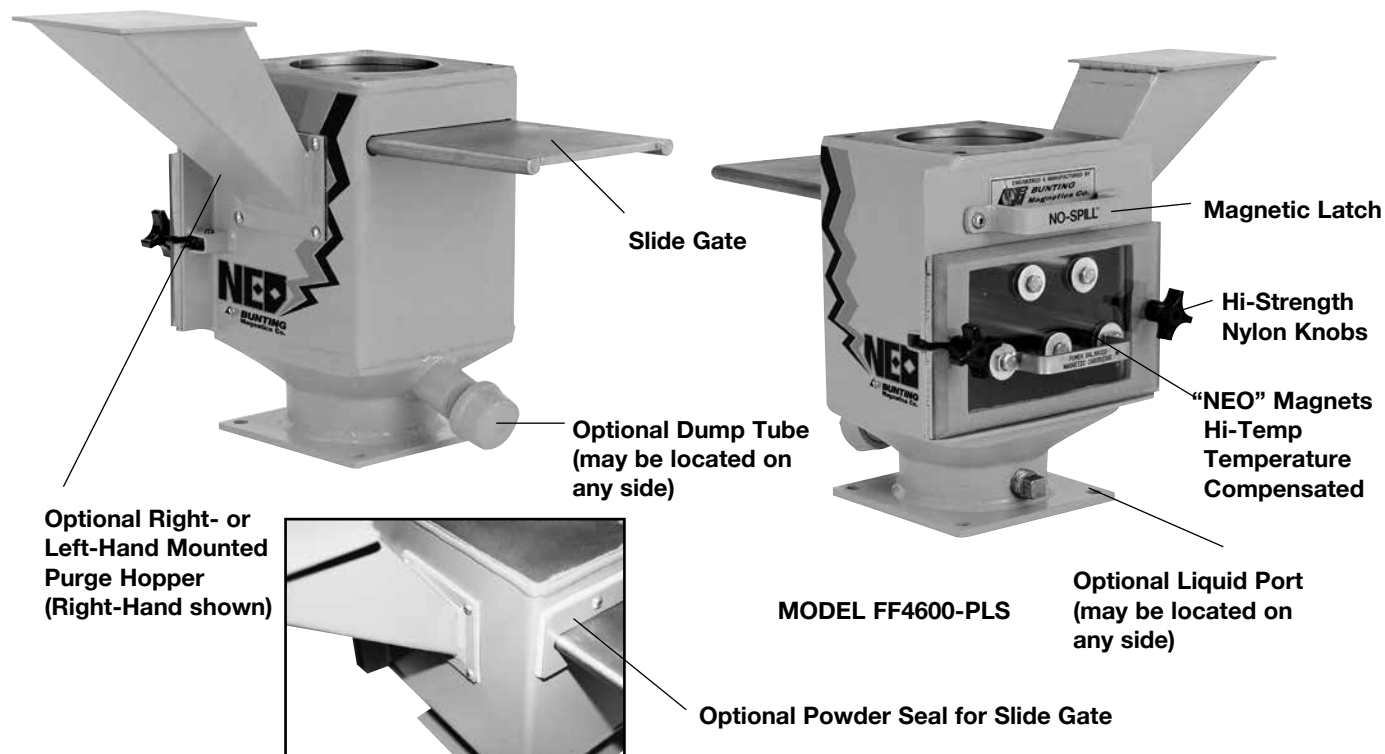


FF Series Drawer Magnet



Drawer Magnet Options

Patented No-Spill™ Slide Gate

The patented No-Spill Slide Gate completely and positively shuts off product flow, so you don't have to worry about product spillage creating a mess or safety hazard when you remove the drawer for cleaning.

Purge Hopper

Our Purge Hopper speeds clean-out of your equipment when changing color or compound – without sacrificing magnetic protection or taking the time to empty your hopper.

Dump Tube

This option lets you empty the drawer housing and material hopper of plastic after a run has been completed.

Liquid Port

The Liquid Port allows you to inject liquid color additive into the resin. The port can also be used to hold a temperature probe.

Powder Seal Kit

This option prevents powder materials from leaking out around the Slide Gate – which is especially important in applications involving PVC or similar powder materials. The kit provides a compression seal around the Slide Gate. Order as original equipment or retrofit on site.

“NEO” Magnets - Standard

Equipped with the most powerful Rare Earth magnets available. Featuring the only temperature-compensated, Rare Earth magnets for injection molding machines.

Stainless Steel Housing

Built with a welded stainless steel housing for easy cleaning and durability.

EPDM Gasket

Featuring a new EPDM gasket that resists heat aging and compression set.

Hi-Strength Nylon Knobs

Fitted with high-torque nylon knobs that resist breakage.

Clear Polycarbonate Drawer Front

Designed with a clear drawer front for easy viewing of product flow and captured contaminants.

Magnetic Latch

Exclusive magnetic latch locks the No-Spill Slide Gate open during operation, yet permits easy closing for purging and color changes.



FF Series Drawer Magnet

Drawer Magnet Selection Guide for Standard and Self-Cleaning FF Series

(Dimensions are in inches and keyed to drawings)



MODEL FF4400-PLS
4x4



MODEL FF4600-PLS
6x6



MODEL FF4800-PLS
8x8



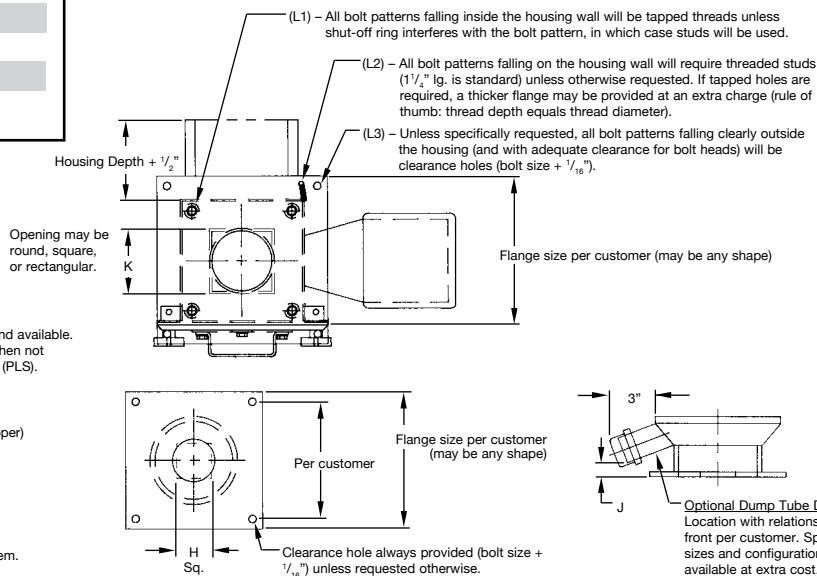
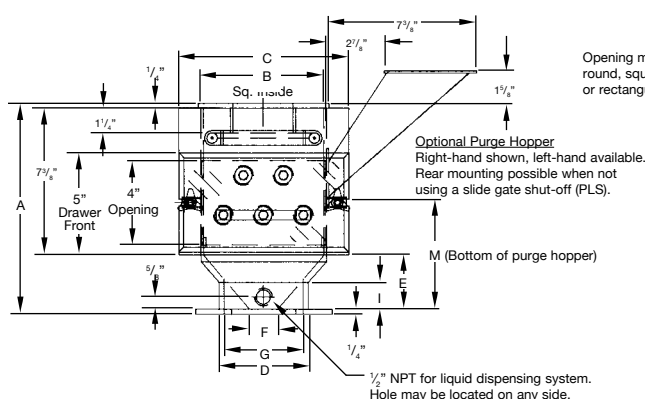
MODEL FF4100-PLS
10x10

Model	FF4400PL/PLS	FF4600PL/PLS	FF4800PL/PLS	FF4100PL/PLS*
A	10 ¹ / ₂	10 ⁵ / ₈	10 ⁷ / ₈	Varies
B	4 X 4	6 X 6	8 X 8	10 X 10
C	6 ¹ / ₂	8 ¹ / ₂	10 ¹ / ₂	12 ¹ / ₂
D	2 ⁵ / ₈	4 ³ / ₈	6 ³ / ₈	Varies
E	2 ⁵ / ₈	2 ³ / ₄	3	Varies
F Min. Rnd. Opp.	7 ¹ / ₈	1 ³ / ₄	3 ¹ / ₈	Varies
G Max. Rnd. Opp.	2 ¹ / ₈	3 ¹ / ₈	6	Varies
H Max. Sq. Opp.	1 ¹ / ₂	2 ³ / ₄	4 ¹ / ₄	Varies
I	1 ¹¹ / ₃₂	1 ⁵ / ₁₆	1 ¹¹ / ₃₂	Varies
J	3 ³ / ₈	7 ¹ / ₁₆	3 ³ / ₄	Varies
K Max. Opp.	3	5	6 ³ / ₄	8 ³ / ₄
L1 L2 L3	Per Customer Specifications			
M	6 ³ / ₈	6 ¹ / ₂	6 ³ / ₄	Varies

* Model FF4100PL/PLS is available with welded transition only (no casting).

Easy Installation

Each of the four standard FF Series units is available with the original No-Spill™ Slide Gate – Bunting designed and patented – to provide safer and more convenient cleaning. All models are also available with self-cleaning drawer modules. Flanges are pre-drilled to OEM or customer specifications. Be sure to request the options, flange specifications, and hole locations you want when ordering.



Ordering Information

Bunting part numbers denote models and features. Drawer Magnet Part Numbers have three parts. The initial two letters designate the model type. The numerical digits indicate the size of the square top plate. The trailing letters specify Drawer Magnet options.

For example: **Part FFS4600-PLS-CR**
This part number describes an FF Series Drawer Magnet with a 6" Square Stainless Steel Housing equipped with a Slide Gate and Ceramic Magnet-Powered Cartridges.

FF Series Part Number Explanation

Model/Type	Options	Size
FF	Mild Steel Housing	4400 = 4" Square
FFS	Stainless Steel Housing	4600 = 6" Square
		4800 = 8" Square
		4100 = 10" Square
		PL = Without Slide Gate
		PLS = With Slide Gate

Low-Profile Part Number Explanation

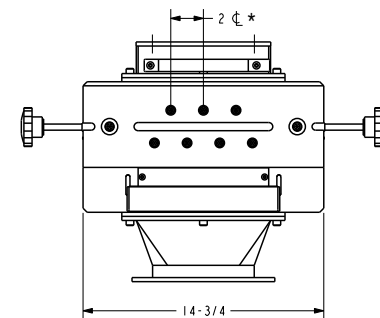
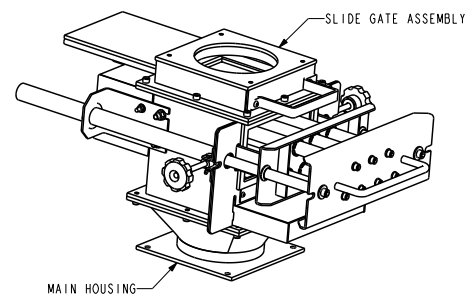
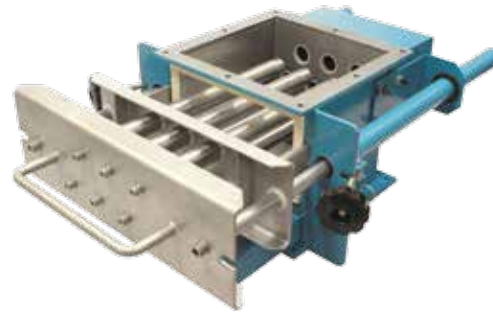
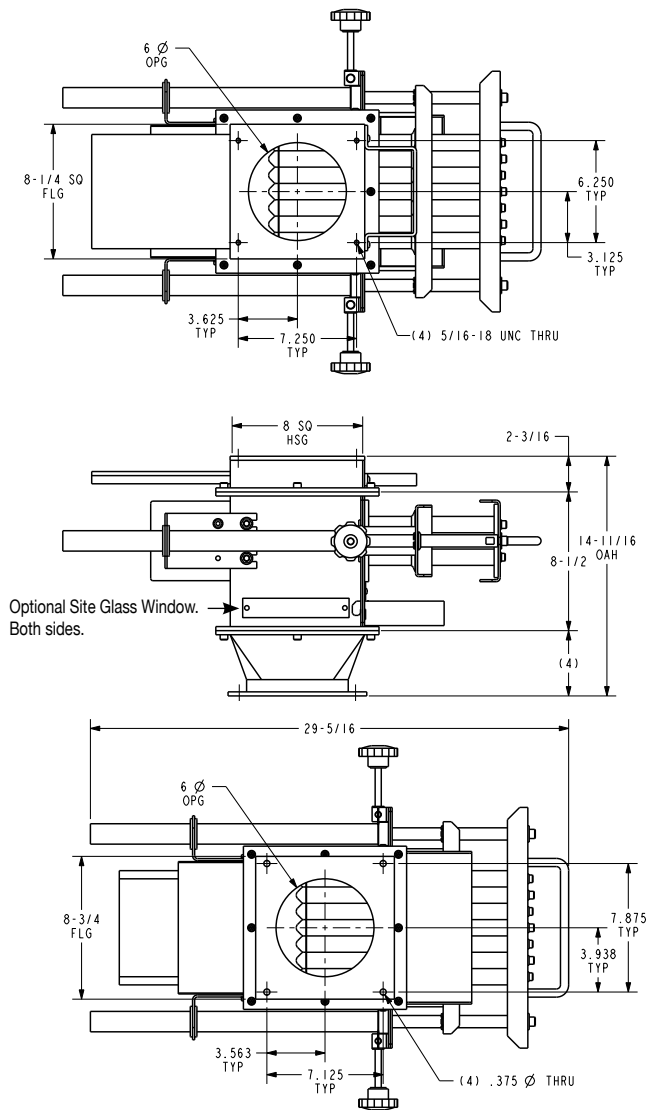
Model/Type	Options	Size
LP	Mild Steel Housing	1600 = 6" Square
LPS	Stainless Steel Housing	1800 = 8" Square
		PL = Without Slide Gate
		PLS = With Slide Gate

Please specify purge hopper, dump tube, and liquid dispensing port options and locations when ordering.

Our new NEO Drawer Magnets are outfitted with super-strong Neodymium Rare Earth magnets that capture and hold ferrous metal particles so small that you may not be able to see them with the naked eye. Unlike competing Rare Earth drawer magnets that can permanently lose their magnetic fields at temperatures above 175° F, Bunting's exclusive design is the **only** temperature-compensated Rare Earth drawer magnet made for injection molding machines. It is guaranteed not to lose its permanent magnetic strength when bolted to feed throats operating at temperatures in excess of 175° F. That means less downtime for you with reduced screw wear and fewer plugged nozzles.

Manual Self-Cleaning FF Drawer Magnet

Available in 6", 8" and 12" models

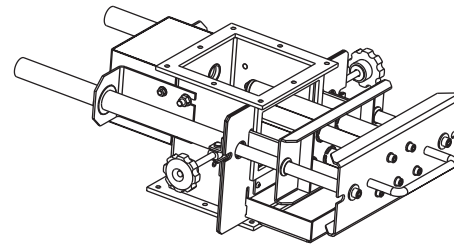
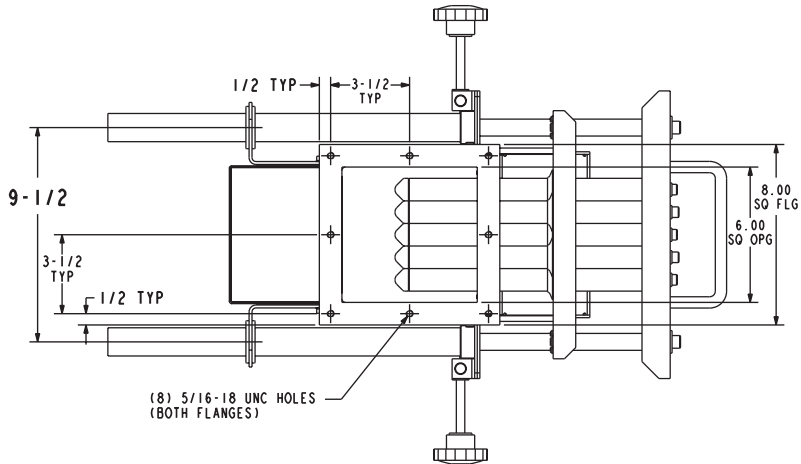


* Optional 3" centers for regrind or bridgeable material

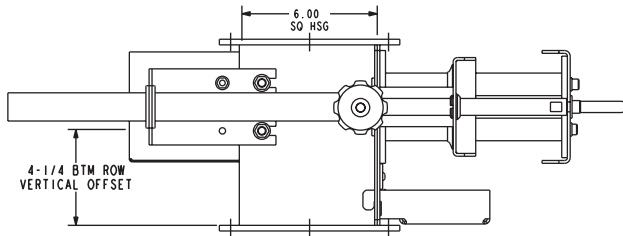


Manual Self-Cleaning FF Drawer Magnet

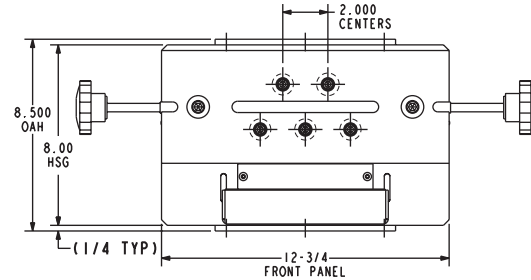
6" model - available with optional slide-gate



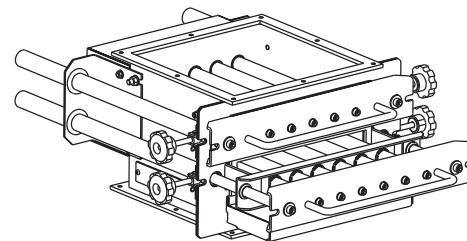
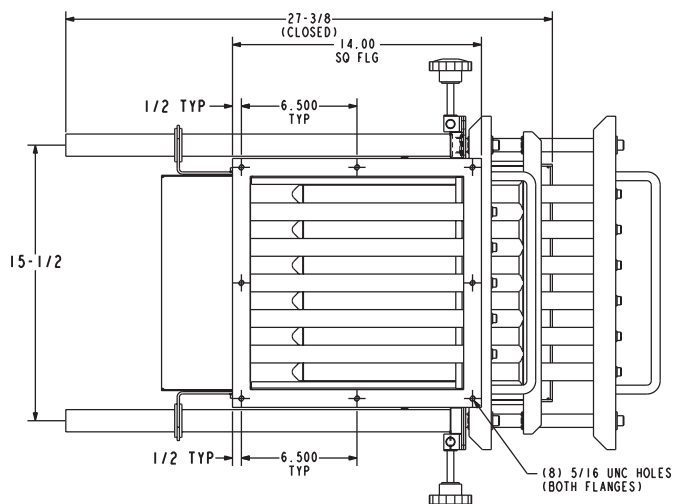
SCALE 0.250



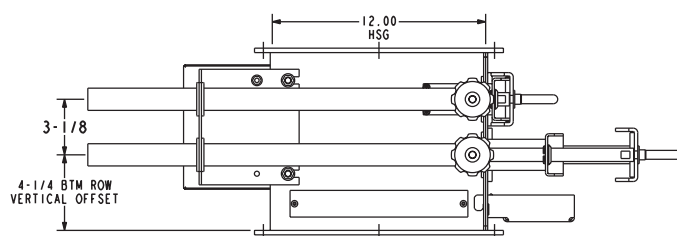
NOTE: TOP AND BOTTOM FLANGES ARE IDENTICAL.



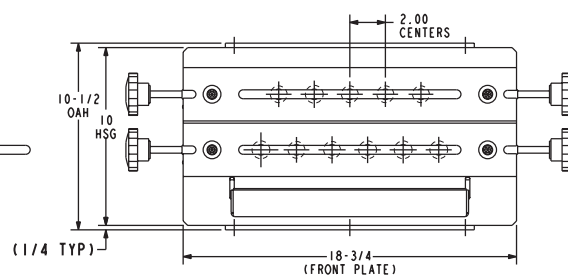
12" model - available with optional slide-gate



SCALE 0.218



NOTE: TOP & BOTTOM FLANGES ARE IDENTICAL



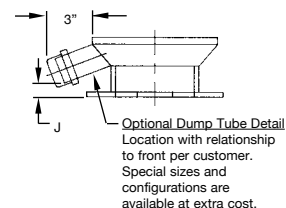
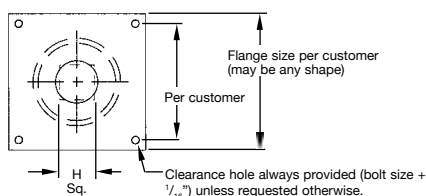
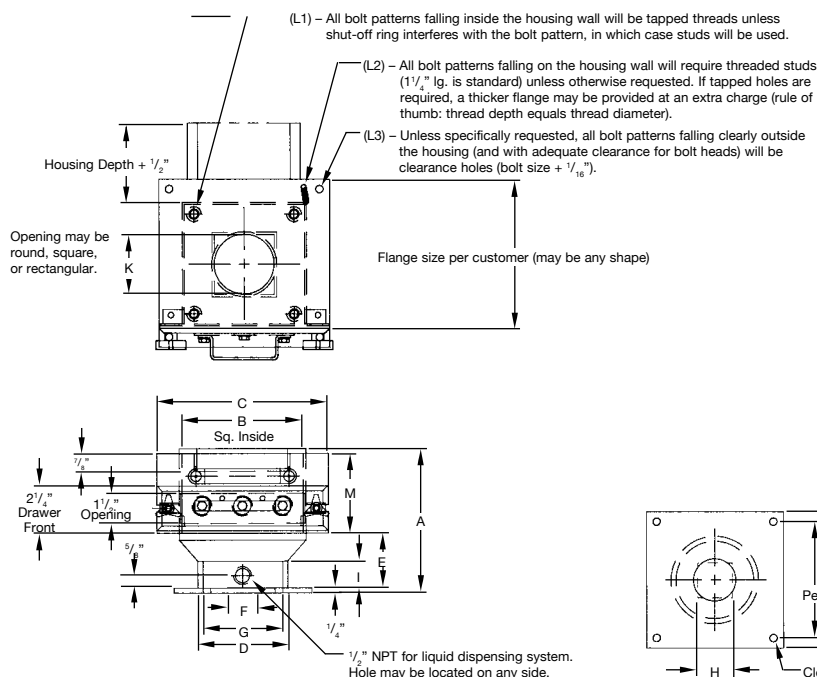
Low-Profile FF Series Drawer Magnet



When headroom is critical, you need Bunting's Low-Profile Drawer Magnet. Get Bunting's proven design in a space-saving 5 15/16" overall height. Standard features include a single row of our exclusive Permanent Magnetic Cartridges, clear polycarbonate drawer front, and rigid 10-gauge mild steel construction. You can even purchase these units with our original No-Spill™ Slide Gate option. Stainless steel construction and Rare Earth Magnetic Cartridges are also available. We'll pre-drill the unit's rugged 1/4" thick flanges to your specifications at no extra charge.

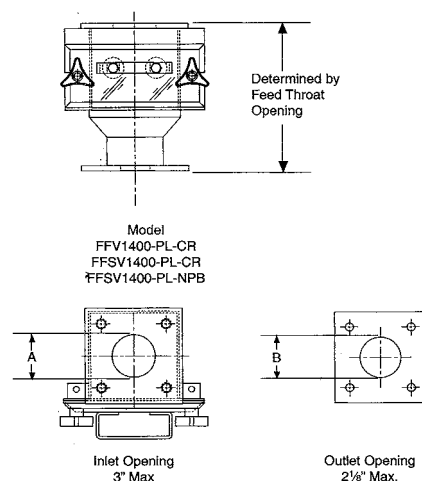
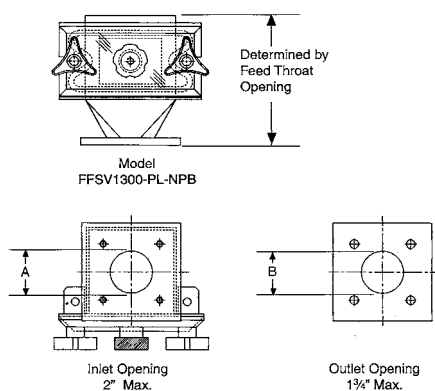
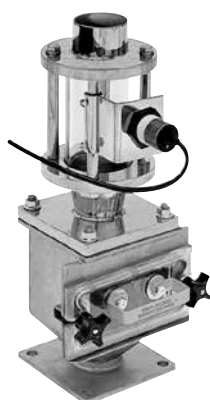
Low-Profile Drawer Magnet Selection Guide

Model	LP1600PL	LP1600PLS	LP1800PL	LP1800PLS
A	5 11/16	7 1/4	5 15/16	7 1/2
B	6 X 6	6 X 6	8 X 8	8 X 8
C	8 1/2	8 1/2	10 1/2	10 1/2
D	4 3/8	4 3/8	6 3/8	6 3/8
E	2 3/4	2 3/4	3	3
F Min. Rnd. Opg.	1 3/4	1 3/4	3 1/8	3 1/8
G Max. Rnd. Opg.	3 7/8	3 7/8	6	6
H Max. Sq. Opg.	2 3/4	2 3/4	4 1/4	4 1/4
I	1 5/16	1 5/16	1 11/32	1 11/32
J	7/16	7/16	3/4	3/4
K Max. Opg.	5	5	6 3/4	6 3/4
L1 L2 L3	Per Customer Specifications			
M	2 7/16	4	2 7/16	4



FFV Drawer Magnet

Our FFV Series Drawer Magnets are specifically designed for small volume, closed-loop "Just-In-Time" systems.



Dimensions A and B per Customer Specs.