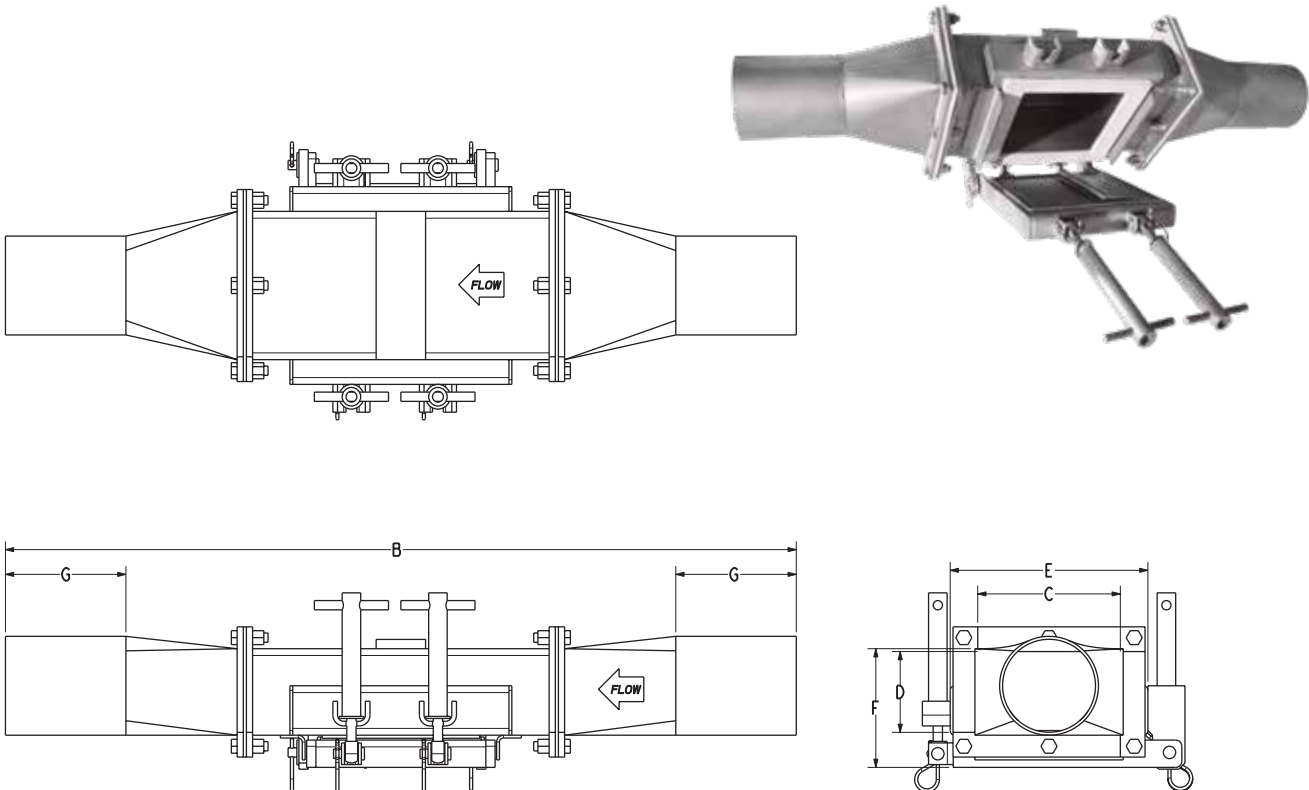


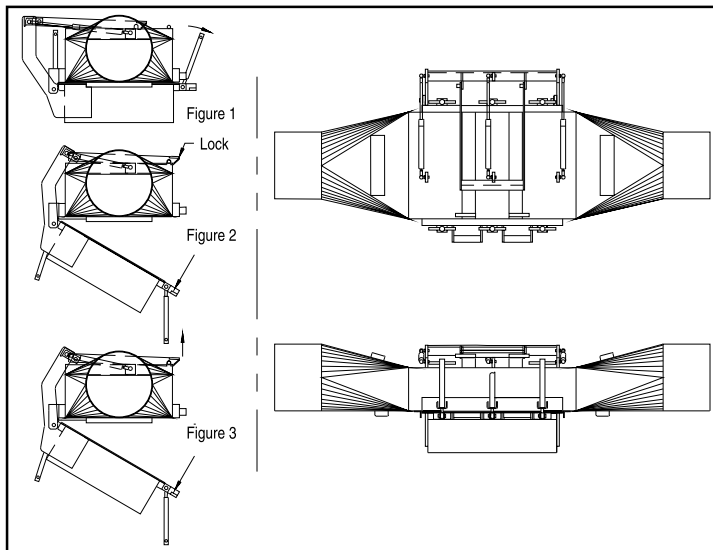
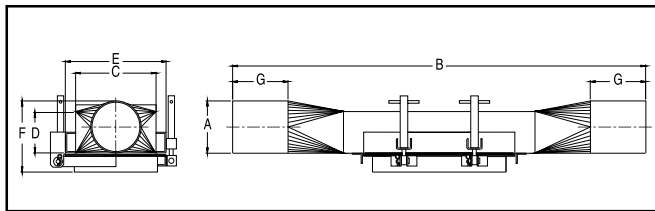
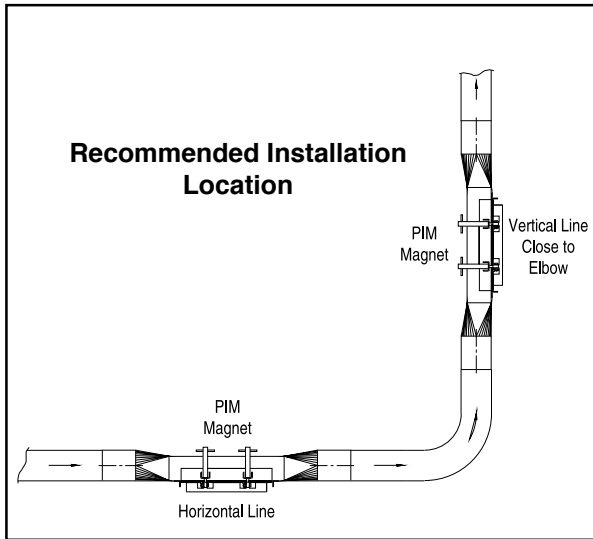
Pneumatic In-Line Magnet (PIM)

Model No.	A*	B	C	D	E	F
PIM-2-CR	2	36	6	3 1/2	8	4 7/8
PIM-2-NE	2	32	6	3 1/2	8	4 7/8
PIM-3-CR	3	36	6	3 1/2	8	4 7/8
PIM-3-NE	3	32	6	3 1/2	8	4 7/8
PIM-4-CR	4	36	6	3 1/2	8	4 7/8
PIM-4-NE	4	32	6	3 1/2	8	4 7/8
PIM-5-CR	5	41	8	4	10	5 1/2
PIM-5-NE	5	38	8	4	10	4 7/8
PIM-6-CR	6	55	12	4	14	7
PIM-6-NE	6	52	12	4	14	6 3/8
PIM-8-CR	8	61	17	5	19	7
PIM-8-NE	8	53	17	5	19	6 3/8
PIM-10-CR	10	65	20	6 1/2	22	7
PIM-10-NE	10	57	20	6 1/2	22	7

Available in Food & Utility grade finishes.
Dimensions in inches. Specifications are subject to change without notice.
* Please specify tubing or pipe size when ordering.
Tapered Step standard.



Specifications are subject to change without notice.



SPECIFICATIONS
General material: 11 Ga. 302/304 stainless steel with standard size tube ends.
Magnet material: High-density Ceramic (LR) permanent magnetic material. Rare Earth (NE) models available.
Magnet design: Standard plate magnet with 400 series stainless steel exposed pole face. Other face styles available.
Construction: Housing is seam welded into an integral unit. Magnet furnished with hinge, latches, and silicone gasket. Compression couplings can be ordered for installation. Special adapters available upon request.
Method of cleaning: Manual, from outside of housing, utilizing hinged swing-away magnet. Self cleaning models available.
Sizes: Available in 2" through 12" line sizes. Special sizes available upon request.

Pneumatic In-Line Magnets (PIM)

Bunting Pneumatic In-Line Magnets are designed for use in dilute-phase pneumatic conveyor systems. Because it uses a powerful plate magnet, product flow is basically unobstructed. It can be installed easily with factory-supplied compression couplings, available upon request.

For best magnetic separation, the Pneumatic In-Line Magnet should be installed in horizontal runs with the plate magnet down. This installation position takes advantage of the natural material stratification that occurs in a horizontal line due to gravity. Heavier objects, including tramp metal, tend to settle and ride in the bottom portion of the line at a lower velocity than the rest of the material. This, combined with the unique housing design, directs material flow to the plate magnet's face. The Pneumatic In-Line Magnet can also be installed in a vertical position directly after an elbow with the magnet located on the outside of the sweep.

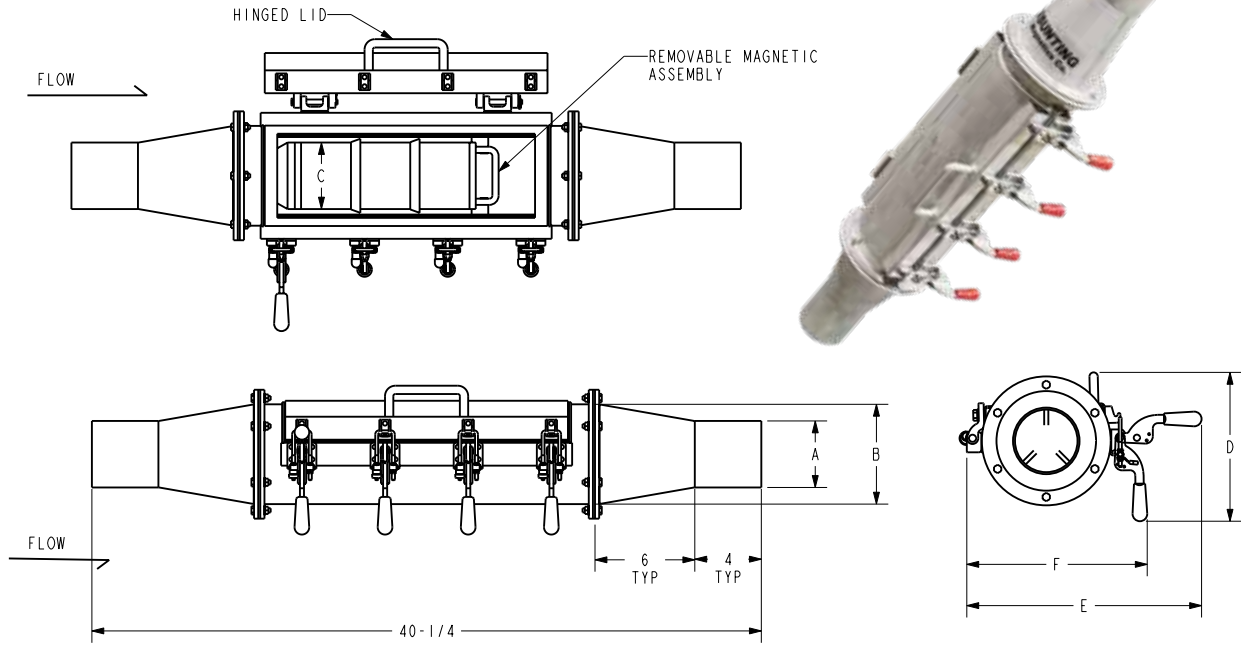
The plate magnet creates a strong magnetic field across the entire cross section of the housing for superior separation performance. To clean the plate magnet, simply loosen the clamping handles and swing the magnet open. Then wipe any tramp metal off the plate magnet. **Eight- and ten-inch models are available with gas cylinders to assist in opening and closing the substantial plate magnets.** Self-Cleaning Pneumatic In-Line magnets are available.

Model No.	A	B	C	D	E	F	G
PIM-2-CR	2	34	4	2	6	3 ⁵ / ₈	5 ¹ / ₂
PIM-2-NE	2	32	4	2	6	3 ³ / ₈	5 ¹ / ₂
PIM-3-CR	3	36	4	3	6	5 ³ / ₄	5 ¹ / ₂
PIM-3-NE	3	32	4	3	6	4 ³ / ₈	5 ¹ / ₂
PIM-4-CR	4	36	6	3 ¹ / ₂	8	6 ³ / ₄	5 ¹ / ₂
PIM-4-NE	4	32	6	3 ¹ / ₂	8	5 ³ / ₄	5 ¹ / ₂
PIM-5-CR	5	41	8	4	10	10 ¹ / ₈	5 ¹ / ₂
PIM-5-NE	5	38	8	4	10	6 ³ / ₄	5 ¹ / ₂
PIM-6-CR	6	55	12	4	14	11 ¹ / ₈	7
PIM-6-NE	6	52	12	4	14	7 ³ / ₄	7
PIM-8-CR	8	61	14	5	16	14 ¹ / ₄	7
PIM-8-NE	8	53	14	5	16	10 ¹ / ₂	7
PIM-10-CR	10	65	16	6 ¹ / ₂	18	16 ¹ / ₄	7
PIM-10-NE	10	57	16	6 ¹ / ₂	18	12 ¹ / ₂	7

* Please specify tubing or pipe size when ordering.

Center-Flow Magnet (CFM) - Bolt on Flanges

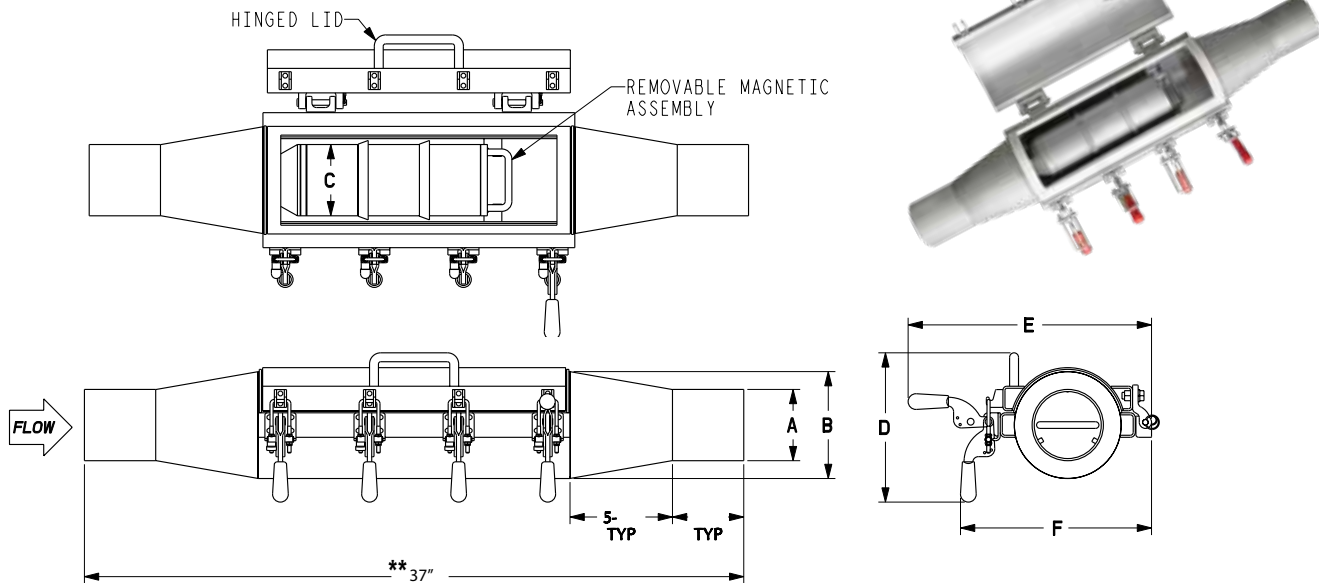
Sizes 2" - 8" available with bolt on flanges.



Specifications are subject to change without notice.

Center-Flow Magnet (CFM) - Standard Flanges

Sizes 8" and larger available with welded on flanges.



Model No.	A	B	C	D	E	F
+CFM-3-NE	3	6	4	8 5/16	14 1/8	10 3/4
+CFM-4-NE	4	6	4	8 5/16	14 1/8	10 3/4
**CFM-5-NE	5	7	4	9 3/8	14 1/8	11 7/4
**CFM-6-NE	6	8	5	10 1/2	14 1/8	13 1/4

* Please specify tubing or pipe size when ordering

* Other magnetic loads available

* Food Grade Construction Available - Add an "F" at the end of the model number if this is for Food Grade.

* Rated for up to 15 PSI

+ 2" - 8" sizes are manufactured with bolt on flanges. 8" and over sizes are manufactured with welded on flanges.

** CFM-5-NE and CFM-6-NE have a length of 37"

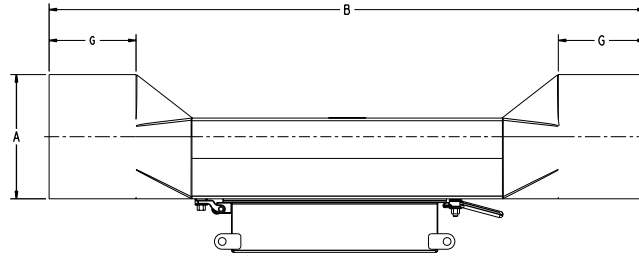
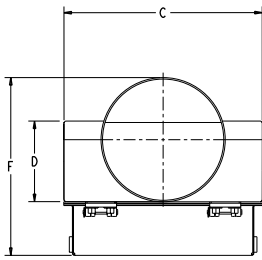
Gravity In-Line Magnet (GIM)

Model No.	A	B	C	D	F	G
GIM-5	5	33	8	4	7 13/16	5 1/2
GIM-5-NE	5	29	8	4	6 7/16	5 1/2
GIM-6	6	38	12	4	7 13/16	5 1/2
GIM-6-NE	6	34	12	4	6 7/16	5 1/2
GIM-8	8	41	14	5	7 13/16	5 1/2
GIM-8-NE	8	38	14	5	6 7/16	5 1/2
GIM-10	10	48	16	6 1/2	7 13/16	5 1/2
GIM-10-NE	10	40	16	6 1/2	6 7/16	5 1/2
GIM-12	12	51	22	6 1/2	7 13/16	5 1/2
GIM-12-NE	12	43	22	6 1/2	6 7/16	5 1/2



SPECIFICATIONS

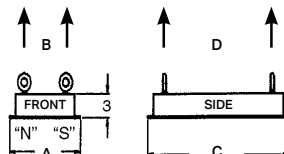
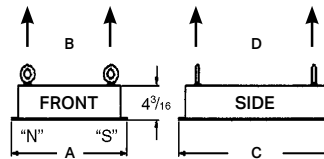
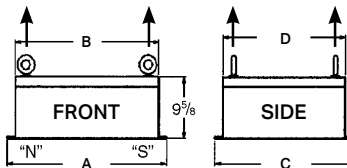
General material: 13 Ga. 302/304 stainless steel with standard size tube ends.
Magnet material: High-density Ceramic (CR) permanent magnetic material. Rare Earth (NE) models available.
Magnet design: Standard plate magnet with 400 series stainless steel exposed pole face. Other face styles available.
Construction: Housing is seam welded into an integral unit. Magnet furnished with hinge, latches, and silicone gasket. Compression couplings for installation and special adapters are available upon request.
Method of cleaning: Manual, from outside of housing, utilizing hinged swing-away magnet. Self cleaning models available (SC).
Sizes: Available in 5" through 12" line sizes. Special sizes available upon request.



Suspended Plate Magnet

The sizes shown below are for troughed belts. For flat belt applications, match dimension A to the belt width. Dimensions in inches.
 For Food Grade, add an "F" at the end of the model number.

	SIDE VIEW		FRONT VIEW				Height
	Magnetic Reachout	A	B	C	D		
950							
PMS 24	10	18	14 1/4	27 3/4	21 1/4	9 5/8	
PMS 30	10	24	20 1/4	27 3/4	21 1/4	9 5/8	
PMS 36	10	26 7/8	28 7/8	27 3/4	24 31/32	9 5/8	
PMS 42	10	36	32 1/4	27 3/4	21 1/4	9 5/8	
PMS 48	10	42	38 1/4	27 3/4	21 1/4	9 5/8	
650							
PMSC6518F	6.5	18	14 1/4	18	16 5/8	4 3/16	
PMSC6524F	6.5	24	20 1/4	18	16 5/8	4 3/16	
PMSC6530F	6.5	30	26 1/4	18	16 5/8	4 3/16	
PMSC6536F	6.5	36	32 1/4	18	16 5/8	4 3/16	
PMSC6542F	6.5	42	38 1/4	18	16 5/8	4 3/16	
450							
PMSC4512F	4.5	12	8 1/4	12	10 5/8	3	
PMSC4518F	4.5	18	14 1/4	12	10 5/8	3	
PMSC4524F	4.5	24	20 1/4	12	10 5/8	3	
PMSC4530F	4.5	30	26 1/4	12	10 5/8	3	
PMSC4536F	4.5	36	32 1/4	12	10 5/8	3	



SPECIFICATIONS

General material: All mild steel with structural steel support frame. Heavy 302/304 stainless steel magnet face.
Magnet material: High-density Ceramic permanent magnet with 1/2 pound of pull at 9".
Magnet design: Massive bipolar, deep-penetrating magnetic field.
Construction: Magnet welded into integral unit. Support frame sub-assembly weldments. Bolt-together field installation.
Contaminant removal: Tramp iron such as nuts, bolts, wire, chain, hammers, crowbars, etc. from free-flowing, granular, clumping, or bridging-type materials.
Method of cleaning: Manual, over conveyor belt or from side of belt, with optional sliding face-plate feature for easy cleaning. Styles: Can be furnished with or without support frame.
Sizes: Available in 5 sizes to fit 24" through 48" belt widths. Frame fabricated to fit existing equipment per customer specifications.
Uses: To protect particulate handling equipment from damage and hazards of tramp iron. Usually mounted directly over conveyor belts and as close to product

Specifications are subject to change without notice.