

Mold Chutes

Quick Setup, Removal,
Increase Product Yield

Features

- **Protects** delicate parts and reduces waste
- Keeps parts from **scattering**
- **Abrasion, puncture and tear resistant**
- **Repels oil and dirt, easily cleaned**
- Maximum operating temperature of **230°F**
- Available in **Right Angle** (moveable with mold), **In-Line** (fixed), **Soft Drop Right Angle** (fixed) and **Soft Drop In-Line** (fixed)
- Available in **Standard and Custom sizes**
- Available in **Food Grade** material, upon request

Description

Mold Chutes are an ideal solution to prevent parts from scattering randomly in the “drop zone”. Mold Chutes ensure your parts land on the conveyor or in the packing case - **not on the floor** - reducing waste and increasing profits.

Made of a durable polyester reinforced material with an internal polyester screen mesh and a flexible polypropylene white slide bottom, mold chutes are easily attached and removed from the molding machine using magnets and Velcro straps. Mold Chutes are reliably sturdy, yet gently enough to protect even the most delicate parts. The Mold Chute's unique construction and material composition enable it to repel oil and grease, and is abrasion, puncture and tear resistant. Mold Chutes are easily cleaned and there are no folds to trap dirt or parts.

Right Angle Mold Chutes (RMC) have a side exit delivery and can move with the mold. **In-Line Mold Chutes (IMC)** have a side exit delivery, but are fixed and do not move with the mold.

Soft Drop Mold Chutes (SDMC) have a unique design that allow for delicate parts to fall gently through the mold chute and slowly transfer to the conveyor or packing case. Soft Drop Mold Chutes are available as **Right Angle (SDRMC)** or **In-Line (SDIMC)**, both fixed and do not move with the mold.

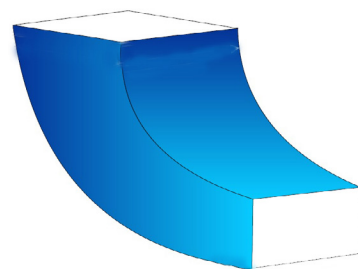
Mold chutes are available in standard and custom sizes, and available in food grade material, upon request. [Straight or Tapered Mold Skirts](#) are available when a chute is not required. All hardware is included. For a complete part containment solution use with: [Moldshields™](#)

All Mold Chutes are made to order.



Mold Chutes

Keep parts off the floor and
profits in your pocket.



Soft Drop Right Angle Mold Chutes (SDRMC):

Model Number	Mold Width "A"	Chute Height "B"	Chute Length "C"	Mold Open "D"	Discharge Height "E"
SDRMC-25	10" (25cm)	22" (56cm)	24" (61cm)	8" (20cm)	6" (15cm)
SDRMC-30	11" (28cm)	23" (58cm)	26" (66cm)	10" (25cm)	6" (15cm)
SDRMC-35	12" (30cm)	24" (61cm)	28" (71cm)	10" (25cm)	6" (15cm)
SDRMC-40	13" (33cm)	25" (63cm)	30" (76cm)	12" (30cm)	6.5" (16.5cm)
SDRMC-45	14" (35cm)	26" (66cm)	32" (81cm)	14" (35cm)	6.5" (16.5cm)
SDRMC-50	16" (40cm)	27" (69cm)	34" (86cm)	14" (35cm)	6.5" (16.5cm)
SDRMC-55	18" (46cm)	28" (71cm)	36" (91cm)	16" (40cm)	7" (18cm)
SDRMC-60	20" (51cm)	29" (74cm)	38" (96cm)	18" (45cm)	7" (18cm)
SDRMC-65	22" (56cm)	30" (76cm)	40" (102cm)	18" (45cm)	7.5" (19cm)
SDRMC-70	24" (61cm)	31" (79cm)	42" (107cm)	18" (45cm)	7.5" (19cm)
SDRMC-75	26" (66cm)	32" (81cm)	44" (112cm)	20" (50cm)	8" (20.5cm)
SDRMC-80	28" (71cm)	33" (84cm)	46" (117cm)	20" (50cm)	8" (20.5cm)
SDRMC-85	30" (76cm)	34" (86cm)	48" (122cm)	22" (55cm)	8.5" (21.5cm)
SDRMC-90	32" (81cm)	35" (89cm)	50" (127cm)	22" (55cm)	8.5" (21.5cm)
SDRMC-95	34" (86cm)	36" (91cm)	52" (132cm)	23.5" (60cm)	9" (22.5cm)
SDRMC-100	36" (91cm)	37" (94cm)	56" (142cm)	23.5" (60cm)	9" (22.5cm)
SDRMC-105	38" (96cm)	38" (96cm)	60" (152cm)	35.5" (65cm)	9.5" (23.5cm)

Minimum Conveyor Width = A + 1"

