

Quick Connect Mold Couplers

200/300/500 Series • Standard Brass

In-Stock and Available to Ship

Purchase online at <https://www.plastixs.com/products/plastixs/water-fittings-and-valves/>

Contact sales@plastixs.com or call 508-842-1606 for sizes and styles that are not on our website, but available for purchase.



Item#	Series & Size	Valve Type	Fits Hose ID	Angle	Barb/Thread
M-200	200 (1/4")	Non-Valved Flow-Thru	1/8" ID	Straight	Threaded FNPT
M-204	200 (1/4")	Non-Valved Flow-Thru	1/4" ID	Straight	Standard
M-206	200 (1/4")	Non-Valved Flow-Thru	3/8" ID	Straight	Standard
M-206P	200 (1/4")	Non-Valved Flow-Thru	3/8" ID	Straight	Push-Lok
M-214	200 (1/4")	Non-Valved Flow-Thru	1/4" ID	90 Degree	Standard
M-216	200 (1/4")	Non-Valved Flow-Thru	3/8" ID	90 Degree	Standard
M-216P	200 (1/4")	Non-Valved Flow-Thru	3/8" ID	90 Degree	Push-Lok
M-300	300 (3/8")	Non-Valved Flow-Thru	1/4" ID	Straight	Threaded FNPT
M-306	300 (3/8")	Non-Valved Flow-Thru	3/8" ID	Straight	Standard
M-306P	300 (3/8")	Non-Valved Flow-Thru	3/8" ID	Straight	Push-Lok
M-308	300 (3/8")	Non-Valved Flow-Thru	1/2" ID	Straight	Standard
M-308P	300 (3/8")	Non-Valved Flow-Thru	1/2" ID	Straight	Push-Lok
M-316	300 (3/8")	Non-Valved Flow-Thru	3/8" ID	90 Degree	Standard
M-316P	300 (3/8")	Non-Valved Flow-Thru	3/8" ID	90 Degree	Push-Lok
M-318	300 (3/8")	Non-Valved Flow-Thru	1/2" ID	90 Degree	Standard
M-318P	300 (3/8")	Non-Valved Flow-Thru	1/2" ID	90 Degree	Push-Lok
M-504	500 (1/2")	Non-Valved Flow-Thru	1/2" ID	Straight	Standard
M-506	500 (1/2")	Non-Valved Flow-Thru	3/4" ID	Straight	Standard
M-506P	500 (1/2")	Non-Valved Flow-Thru	3/4" ID	Straight	Push-Lok

Purchase online at <https://www.plastixs.com/products/plastixs/water-fittings-and-valves/>

Contact sales@plastixs.com or call 508-842-1606 for sizes and styles that are not on our website, but available for purchase.



Making the right connection is easy.

Step 1: Select series size 200 (1/4"), 300 (3/8"), 500 (1/2")

Step 2: Select Hose ID size

Step 3: Select angle style (Straight, 90°, 45°)

Step 4: Select valve style (flow-thru, 1-way shut-off, 2-way shut-off)

Step 5: Select standard or push-lok barb

Step 6: Select a compatible (male) plug (if valved shut-off plugs style SV are used,
only 2-way valved couplers style SV or SVP can be used)



Straight Barb



Male Plug



45° Barb



90° Barb

Step 1	Step 2	Step 3	Step 4						Step 6	
Series 200 (1/4") Body Size	Use with Hose ID	Angle	Non-Valved Flow-Thru Coupler Part No.		Valved 1-Way Shut-Off Coupler Part No.		Valved 2-Way Shut-Off Coupler Part No.		Non-valved Flow-thru Male Plug Part No.	Valved Shut-off Male Plug Part No.
			Step 5							
			Standard	Push-Lok	Standard	Push-Lok	Standard	Push-Lok		
	1/4"	Straight	M-204	M-204P	M-204V	M-204VP	M-204SV	M-204SVP	M-250	
	1/4"	90°	M-214	M-214P	M-214V	M-214VP	M-214SV	M-214SVP		
	1/4"	45°	M-224	M-224P	M-224V	M-224VP	M-224SV	M-224SVP	M-251	
	3/8"	Straight	M-206	M-206P	M-206V	M-206VP	M-206SV	M-206SVP	M-252	M-252SV
	3/8"	90°	M-216	M-216P	M-216V	M-216VP	M-216SV	M-216SVP	M-253	M-253SV
3/8"	45°	M-226	M-226P	M-226V	M-226VP	M-226SV	M-226SVP			
Series 300 (3/8") Body Size	3/8"	Straight	M-306	M-306P	M-306V	M-306VP	M-306SV	M-306SVP	M-352	M-352SV
	3/8"	90°	M-316	M-316P	M-316V	M-316VP	M-316SV	M-316SVP		
	3/8"	45°	M-326	M-326P	M-326V	M-326VP	M-326SV	M-326SVP		
	1/2"	Straight	M-308	M-308P	M-308V	M-308VP	M-308SV	M-308SVP	M-353	M-353SV
	1/2"	90°	M-318	M-318P	M-318V	M-318VP	M-318SV	M-318SVP	M-354	M-354SV
	1/2"	45°	M-328	M-328P	M-328V	M-328VP	M-328SV	M-328SVP		
Series 500 (1/2") Body Size	1/2"	Straight	M-504	M-504P	M-504V	M-504VP	M-504SV	M-504SVP	M-553	M-553SV
	1/2"	90°	M-514	M-514P	M-514V	M-514VP	M-514SV	M-514SVP		
	1/2"	45°	M-524	M-524P	M-524V	M-524VP	M-524SV	M-524SVP		
	3/4"	Straight	M-506	M-506P	M-506V	M-506VP	M-506SV	M-506SVP	M-554	M-554SV
	3/4"	90°	M-516	M-516P	M-516V	M-516VP	M-516SV	M-516SVP	M-556	
	3/4"	45°	M-526	M-526P	M-526V	M-526VP	M-526SV	M-526SVP		

Adapter Sockets	Hose ID	NPT (F)	NPT (F)	NPT (F)
Series 200	1/8"	M-200	M-200V	M-200SV
Series 300	1/4"	M-300	M-300V	M-300SV
Series 500	1/2"	M-500	M-500V	M-500SV

Contact sales@plastixs.com or call 508-842-1606 for sizes and styles that are not on our website, but available for purchase.



Quick Connect Mold Plugs

200/300/500 Series • Standard Brass



In-Stock and Available to Ship

Purchase online at <https://www.plastixs.com/products/plastixs/water-fittings-and-valves/>

Contact sales@plastixs.com or call 508-842-1606 for sizes and styles that are not on our website, but available for purchase.

Item#	Series & Size	Valve Type	Thread
M-250	200 (1/4")	Non-Valved Flow-Thru	1/16" NPT (M)
M-251	200 (1/4")	Non-Valved Flow-Thru	1/8" NPT (M)
M-252	200 (1/4")	Non-Valved Flow-Thru	1/4" NPT (M)
M-253	200 (1/4")	Non-Valved Flow-Thru	3/8" NPT (M)
M-352	300 (3/8")	Non-Valved Flow-Thru	1/4" NPT (M)
M-353	300 (3/8")	Non-Valved Flow-Thru	3/8" NPT (M)
M-354	300 (3/8")	Non-Valved Flow-Thru	1/2" NPT (M)
M-554	500 (1/2")	Non-Valved Flow-Thru	1/2" NPT (M)
M-556	500 (1/2")	Non-Valved Flow-Thru	3/4" NPT (M)

Purchase online at <https://www.plastixs.com/products/plastixs/water-fittings-and-valves/>

Contact sales@plastixs.com or call 508-842-1606 for sizes and styles that are not on our website, but available for purchase.



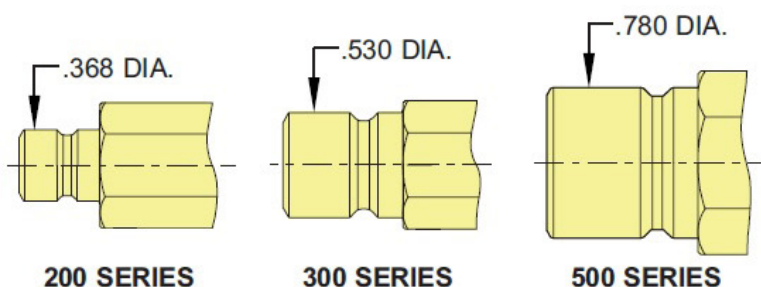
Quick Connect Mold Plugs

200/300/500 Series • Standard Brass

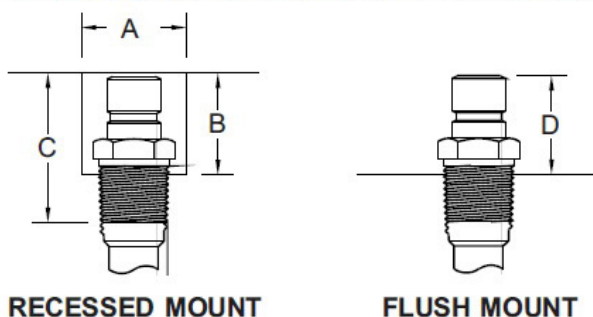


Purchase online at <https://www.plastixs.com/products/plastixs/water-fittings-and-valves/>

Contact sales@plastixs.com or call 508-842-1606 for sizes and styles that are not on our website, but available for purchase.



DIMENSION INFORMATION DRAWINGS



	Item#	Thread Size	Minimum Plug ID	Dimension Information			
				A	B	C	D
	M-250	1/16" NPT	3/16"	11/16"	11/16"	1"	5/8"
	M-251	1/8" NPT	1/4"	11/16"	11/16"	1"	5/8"
	M-252	1/4" NPT	1/4"	27/32"	15/16"	1-3/16"	7/8"
	M-253	3/8" NPT	1/4"	1"	15/16"	1-1/4"	29/32"

	Item#	Thread Size	Minimum Plug ID	Dimension Information			
				A	B	C	D
	M-352	1/4" NPT	3/8"	1"	1-3/32"	1-7/16"	1-1/32"
	M-353	3/8" NPT	3/8"	1"	1-1/8"	1-7/16"	1-1/16"
	M-354	1/2" NPT	3/8"	1-3/16"	1-1/4"	1-9/16"	1-3/16"

	Item#	Thread Size	Minimum Plug ID	Dimension Information			
				A	B	C	D
	M-553	3/8" NPT	.484"	1-3/16"	1-1/4"	1-9/16"	1-3/16"
	M-554	1/2" NPT	5/8"	1-1/4"	1-1/2"	1-11/16"	1-1/2"
	M-556	3/4" NPT	5/8"	1-1/2"	1-9/16"	1-3/4"	1-9/16"

Purchase online at <https://www.plastixs.com/products/plastixs/water-fittings-and-valves/>

Contact sales@plastixs.com or call 508-842-1606 for sizes and styles that are not on our website, but available for purchase.



Quick Connect Water Jumper Couplers

Right-Angle 90° with Standard or Push-Lock Hose Barbs



Features

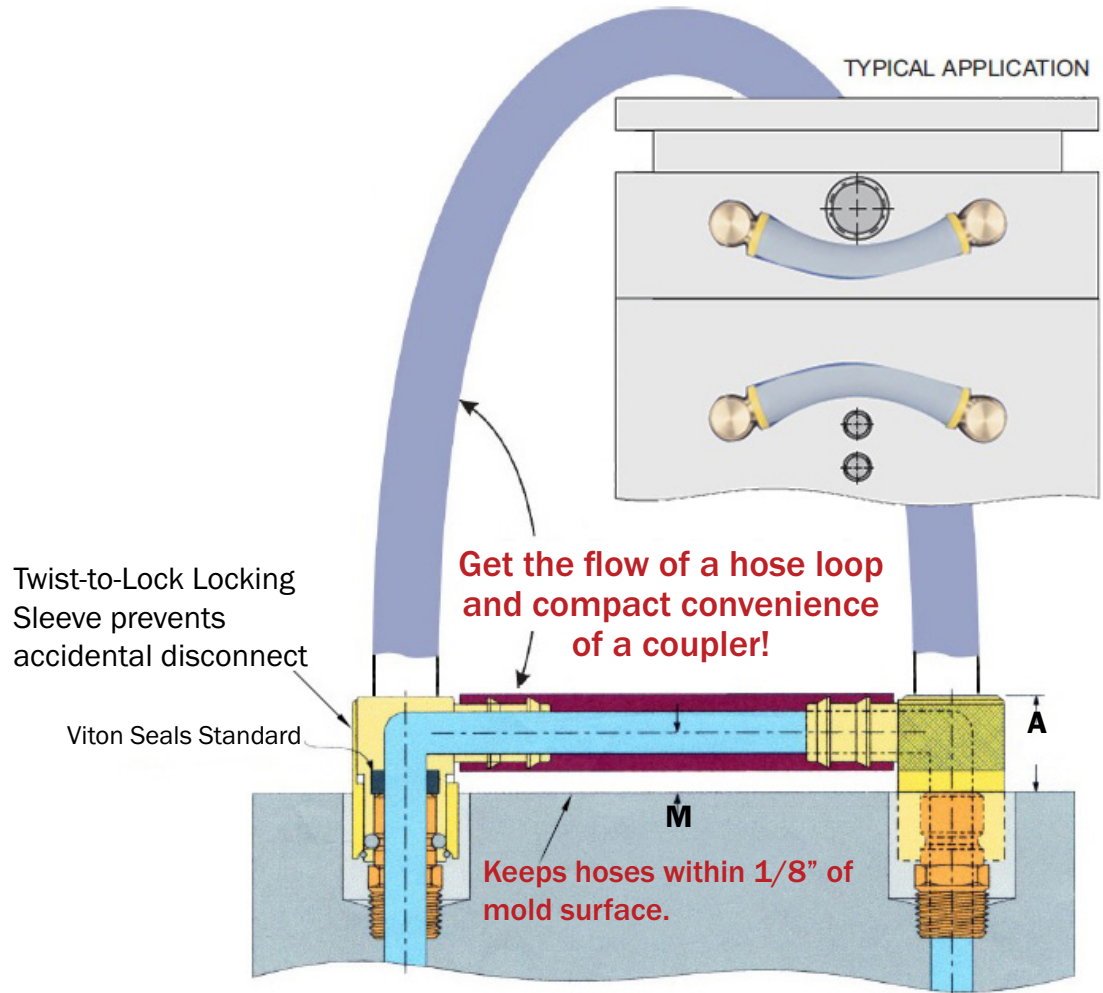
- **Better flow** than competing sockets
- **Smooth, unrestricted** internal flow - path allows **100% flow rate** of hose being used
- **Compact design** neatly and safely holds cooling lines close to the mold surface
- Exclusive **twist-to-lock locking sleeve** prevents accidental disconnect and ensures proper installation
- **Unlimited installation options** allows coupler to fit around obstacles and into tight spaces
- **Compatible** with all major mold connection systems
- All **brass and stainless steel** construction
- **Viton seals** provide for temperatures up to **400°F**
- **300 Series** for **3/8" and 1/2" hose ID**
- Available with **standard hose barbs and push-lock hose barbs**

Description

Plastixs Quick Connect Water Jumper Couplers are specially designed for connecting coolant lines to molds in compact, tight spaces while providing smooth, unrestricted internal flow. The flow path allows 100% flow rate of the hose being used, so you'll get the flow of a hose loop and the compact convenience of a coupler. Water Jumper Couplers are available in 300 Series for 3/8" and 1/2" hose ID with standard or push-lock hose barbs. Plastixs Quick Connect Water Jumper Couplers are ideal for quick mold changes and systems requiring full flow rate.



Better flow than competing sockets.



Type	Item#	Hose ID	Hose Barb
300 Series	WJ306S	3/8"	Standard
	WJ306P	3/8"	Push-Lock
	WJ308S	1/2"	Standard
	WJ308P	1/2"	Push-Lock

Purchase online at <https://www.plastixs.com/product/quick-connect-coupler-water-jumpers/>

Contact sales@plastixs.com or call 508-842-1606 for more information.



Quick Connect Mold Extension Plugs Price

In-Stock and Available to Ship

Purchase online at <https://www.plastixs.com/product/quick-connect-extension-plugs/>

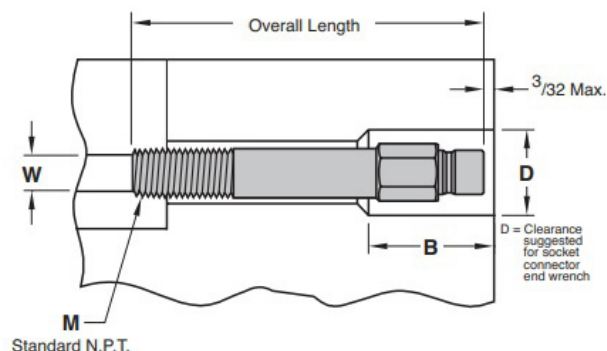
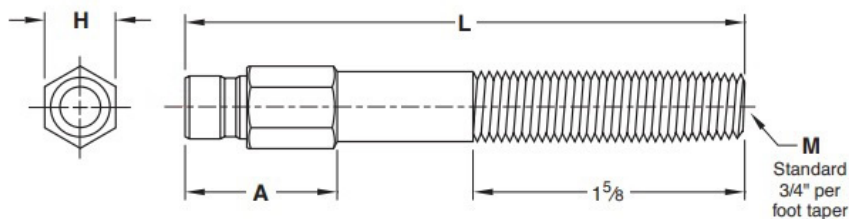
Contact sales@plastixs.com or call 508-842-1606 for sizes and styles



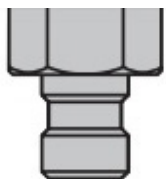
Item#	Series & Size	Length	Thread
M-250X2.5	200 (1/4" Hole)	2.5"	1/16" NPT (M)
M-250X4	200 (1/4" Hole)	4"	1/16" NPT (M)
M-250X5.5	200 (1/4" Hole)	5.5"	1/16" NPT (M)
M-250X7	200 (1/4" Hole)	7"	1/16" NPT (M)
M-251X2.5	200 (1/4" Hole)	2.5"	1/8" NPT (M)
M-251X4	200 (1/4" Hole)	4"	1/8" NPT (M)
M-251X5.5	200 (1/4" Hole)	5.5"	1/8" NPT (M)
M-251X7	200 (1/4" Hole)	7"	1/8" NPT (M)
M-252X2.5	200 (1/4" Hole)	2.5"	1/4" NPT (M)
M-252X4	200 (1/4" Hole)	4"	1/4" NPT (M)
M-252X5.5	200 (1/4" Hole)	5.5"	1/4" NPT (M)
M-252X7	200 (1/4" Hole)	7"	1/4" NPT (M)
M-253X2.5	200 (1/4" Hole)	2.5"	3/8" NPT (M)
M-253X4	200 (1/4" Hole)	4"	3/8" NPT (M)
M-253X5.5	200 (1/4" Hole)	5.5"	3/8" NPT (M)
M-253X7	200 (1/4" Hole)	7"	3/8" NPT (M)
M-352X2.5	300 (3/8" Hole)	2.5"	1/4" NPT (M)
M-352X4	300 (3/8" Hole)	4"	1/4" NPT (M)
M-352X5.5	300 (3/8" Hole)	5.5"	1/4" NPT (M)
M-352X7	300 (3/8" Hole)	7"	1/4" NPT (M)
M-353X2.5	300 (3/8" Hole)	2.5"	3/8" NPT (M)
M-353X4	300 (3/8" Hole)	4"	3/8" NPT (M)
M-353X5.5	300 (3/8" Hole)	5.5"	3/8" NPT (M)
M-353X7	300 (3/8" Hole)	7"	3/8" NPT (M)
M-354X2.5	300 (3/8" Hole)	2.5"	1/2" NPT (M)
M-354X4	300 (3/8" Hole)	4"	1/2" NPT (M)
M-354X5.5	300 (3/8" Hole)	5.5"	1/2" NPT (M)
M-354X7	300 (3/8" Hole)	7"	1/2" NPT (M)



Quick Connect Mold Extension Plugs - 200 Series



200 Series 1/4" Hole



Item#	L Length	M NPT	H Hex Size	A	B	D	W
M-250X2.5	2.5	1/16	.37	.68	1.00	.75	1/4
M-250X4	4.0	1/16	.37	.81	1.00	.75	1/4
M-250X5.5	5.5	1/16	.37	.81	1.00	.75	1/4
M-250X7	7.0	1/16	.37	.81	1.00	.75	1/4

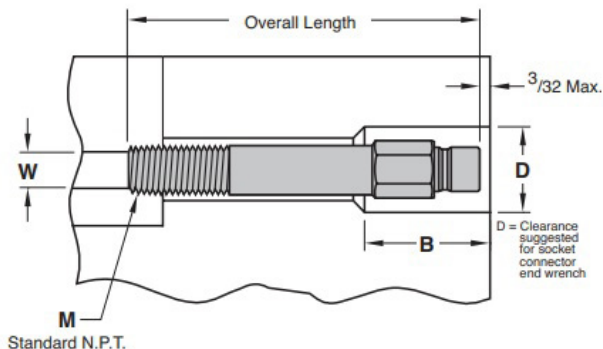
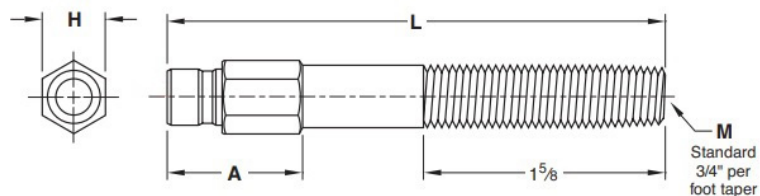
Item#	L Length	M NPT	H Hex Size	A	B	D	W
M-251X2.5	2.5	1/8	.43	.68	1.25	.87	5/16
M-251X4	4.0	1/8	.43	1.00	1.25	.87	5/16
M-251X5.5	5.5	1/8	.43	1.00	1.25	.87	5/16
M-251X7	7.0	1/8	.43	1.00	1.25	.87	5/16

Item#	L Length	M NPT	H Hex Size	A	B	D	W
M-252X2.5	2.5	1/4	.56	.87	1.50	1.00	7/16
M-252X4	4.0	1/4	.56	1.25	1.50	1.00	7/16
M-252X5.5	5.5	1/4	.56	1.25	1.50	1.00	7/16
M-252X7	7.0	1/4	.56	1.25	1.50	1.00	7/16

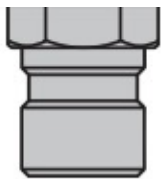
Item#	L Length	M NPT	H Hex Size	A	B	D	W
M-253X2.5	2.5	3/8	.68	1.00	1.50	1.12	9/16
M-253X4	4.0	3/8	.68	1.25	1.50	1.12	9/16
M-253X5.5	5.5	3/8	.68	1.25	1.50	1.12	9/16
M-253X7	7.0	3/8	.68	1.25	1.50	1.12	9/16



Quick Connect Mold Extension Plugs - 300 Series



300 Series 3/8" Hole



Item#	L Length	M NPT	H Hex Size	A	B	D	W
M-350X2.5	2.5	1/16	.56	.87	1.25	1.00	1/4
M-350X4	4.0	1/16	.56	1.00	1.25	1.00	1/4
M-350X5.5	5.5	1/16	.56	1.00	1.25	1.00	1/4
M-350X7	7.0	1/16	.56	1.00	1.25	1.00	1/4

Item#	L Length	M NPT	H Hex Size	A	B	D	W
M-351X2.5	2.5	1/8	.56	.87	1.25	1.00	5/16
M-351X4	4.0	1/8	.56	1.00	1.25	1.00	5/16
M-351X5.5	5.5	1/8	.56	1.00	1.25	1.00	5/16
M-351X7	7.0	1/8	.56	1.00	1.25	1.00	5/16

Item#	L Length	M NPT	H Hex Size	A	B	D	W
M-352X2.5	2.5	1/4	.56	.87	1.50	1.00	7/16
M-352X4	4.0	1/4	.56	1.25	1.50	1.00	7/16
M-352X5.5	5.5	1/4	.56	1.25	1.50	1.00	7/16
M-352X7	7.0	1/4	.56	1.25	1.50	1.00	7/16

Item#	L Length	M NPT	H Hex Size	A	B	D	W
M-353X2.5	2.5	3/8	.68	1.00	1.50	1.12	9/16
M-353X4	4.0	3/8	.68	1.25	1.50	1.12	9/16
M-353X5.5	5.5	3/8	.68	1.25	1.50	1.12	9/16
M-353X7	7.0	3/8	.68	1.25	1.50	1.12	9/16

Item#	L Length	M NPT	H Hex Size	A	B	D	W
M-354X2.5	2.5	1/2	.87	1.12	1.75	1.50	11/16
M-354X4	4.0	1/2	.87	1.50	1.75	1.50	11/16
M-354X5.5	5.5	1/2	.87	1.50	1.75	1.50	11/16
M-354X7	7.0	1/2	.87	1.50	1.75	1.50	11/16

